

RESEARCH

Open Access



# Lipid levels, insulin resistance and cardiovascular risk over 96 weeks of antiretroviral therapy: a randomised controlled trial comparing low-dose stavudine and tenofovir

Alinda G. Vos<sup>1,2,3\*</sup>, Matthew F. Chersich<sup>1</sup>, Kerstin Klipstein-Grobusch<sup>2,4</sup>, Peter Zuithoff<sup>2</sup>, Michelle A. Moorhouse<sup>1</sup>, Samanta T. Lalla-Edward<sup>1</sup>, Andrew Kambugu<sup>5</sup>, N. Kumarasamy<sup>6</sup>, Diederick E. Grobbee<sup>2</sup>, Roos E. Barth<sup>3</sup> and Willem D. Venter<sup>1</sup>

## Abstract

**Background:** HIV infection and antiretroviral treatment are associated with changes in lipid levels, insulin resistance and risk of cardiovascular disease (CVD). We investigated these changes in the first 96 weeks of treatment with low-dose stavudine or tenofovir regimens.

**Methods:** This is a secondary analysis of a double blind, randomised controlled trial performed in South-Africa, Uganda and India comparing low-dose stavudine (20 mg twice daily) with tenofovir in combination with efavirenz and lamivudine in antiretroviral-naïve adults ( $n = 1067$ ) (Clinicaltrials.gov, NCT02670772). Over 96 weeks, data were collected on fasting lipids, glucose and insulin. Insulin resistance was assessed with the HOMA-IR index and 10-year CVD risk with the Framingham risk score (FRS). A generalized linear mixed model was used to estimate trends over time.

**Results:** Participants were on average 35.3 years old, 57.6% female and 91.8% Black African. All lipid levels increased following treatment initiation, with the sharpest increase in the first 24 weeks of treatment. The increase in all lipid subcomponents over 96 weeks was higher among those in the stavudine than the tenofovir group. Insulin resistance increased steadily with no difference detected between study groups. FRS rose from 1.90% (1.84–1.98%) at baseline to 2.06 (1.98–2.15%) at week 96 for the total group, with no difference between treatment arms ( $p = 0.144$ ). Lipid changes were more marked in Indian than African participants.

**Conclusion:** Lipid levels increased in both groups, with low-dose stavudine resulting in a worse lipid profile compared to tenofovir. Insulin resistance increased, with no difference between regimens. CVD risk increased over time and tended to increase more in the group on stavudine. The low CVD risk across both arms argues against routine lipid and glucose monitoring in the absence of other CVD risk factors. In high risk patients, monitoring may only be appropriate at least a year after treatment initiation.

**Keywords:** HIV, South Africa, Uganda, India, Stavudine, Tenofovir, Cardiovascular disease risk

\*Correspondence: avos@wrhi.ac.za

<sup>1</sup> Wits Reproductive Health and HIV Institute, Faculty of Health Sciences, University of Witwatersrand, Johannesburg, South Africa

Full list of author information is available at the end of the article



## Introduction

Globally, cardiovascular disease (CVD) is the leading cause of mortality [1]. Low- and middle-income countries (LMICs) share this burden: the leading cause of death has changed from infectious diseases to ischaemic heart disease over the last two decades [1]. Timely recognition and treatment of cardiovascular risk factors are key for reducing the burden of CVD. Human immunodeficiency virus (HIV) infection and treatment with antiretroviral therapy (ART) affects risk factors for CVD [2–5] and some studies indicate that HIV infection increases the risk of myocardial infarction or stroke by up to 50% [6, 7].

The contribution of ART to CVD risk is less clear, and risk profiles vary by antiretroviral drug [8]. Protease inhibitors and efavirenz, a non-nucleoside reverse transcriptase inhibitor, are well known for their adverse effects on lipid and glucose metabolism [9–11]. Stavudine, a nucleoside reverse transcriptase inhibitor (NRTI), has considerable metabolic side effects. It is associated with mitochondrial toxicity, resulting in lipodystrophy, disturbances in lipid levels and an increase in insulin resistance [12–15]. Stavudine was part of first-line ART for many years globally, as it was well tolerated in the first few months of treatment, cheap, widely available in twice-daily fixed-dose formulations and effective in suppressing viral load [16]. When the extent of mitochondrial toxicity became apparent, use of the drug declined rapidly. Between 2012 and 2016, a clinical trial was initiated, comparing a lower dose of stavudine to the current most commonly used first-line drug, tenofovir disoproxil fumarate ('tenofovir'). The overall conclusion was that low-dose stavudine was equally effective as tenofovir in reducing viral load after 48 weeks, but that lipodystrophy occurred more often in the low-dose stavudine group [17]. Extensive metabolic and toxicity monitoring allow us to conduct an in-depth analysis of the effects of ART initiation with low-dose stavudine or tenofovir on lipid levels, insulin resistance and CVD risk, an important analysis as the vast majority of people on ART are taking regimens containing tenofovir. We present these results in this paper.

## Methods

A randomised 1:1 double blind placebo-controlled trial was conducted in Johannesburg, South Africa, Kampala, Uganda and Chennai, India to assess the efficacy and safety of treatment with either low dose stavudine (20 mg twice a day) or tenofovir (300 mg daily) tablets administered in combination with lamivudine (150 mg BD) and efavirenz (600 mg daily) over

96 weeks (Clinicaltrials.gov, NCT02670772). The methods including quality control and safety evaluation are described in detail elsewhere [17]. In brief, data were captured in an electronic data system. Computerised and manual procedures as well as regular site visits were implemented to optimise data quality. Monitoring and support was undertaken by Pharmaceutical Product Development (PPD, Wilmington, USA). 1067 HIV-positive, ART-naive participants aged 18 years and over with unsuppressed HIV viral load were included from clinical trial sites. Recruitment in India was stopped early due to a regulatory change, and it was decided to raise the number of participants recruited in the remaining sites so as to reach the target number timeously. Exclusion criteria were age above 65 years for the Indian site, pregnancy, CD4+ > 350 cells/ $\mu$ L, hepatitis B antigen positivity, or an estimated glomerular filtration rate (eGFR) < 60 mL/min, calculated using the Cockcroft-Gault equation. Visits took place at baseline, 1 month, 3 months and every 3 months thereafter until 96 weeks. Data collected at baseline included demographic information, medical history including use of medication. In the South African site only, additional data on employment, marital status, having children, as well as data on current smoking, alcohol and drug use were collected.

At each visit, weight, heart rate and blood pressure were measured and blood samples taken. Blood pressure was measured once in a seated position after a 5-min rest. Blood sampling was performed after an overnight fast and included lipids, glucose, insulin, HIV viral load and CD4+ count. Blood samples were analysed by contracted and accredited laboratory services (see Additional file 1: Table S1 for more details). Insulin resistance was quantified with the HOMA-IR, using the following formula: fasting glucose (mmol/L) \* fasting insulin (mU/L))/22.5 [18]. Framingham risk score (FRS) was calculated using the 10-year CVD risk score equation, and only available for South Africa, as the risk score includes smoking history [19]. The study was approved by the Human Ethics Research Committee of the University of the Witwatersrand, ethics clearance number 111112, the Research and Ethics Committee of the Joint Clinical Research Centre, Uganda, and the Uganda National Council for Science and Technology clearance number HS 1219, and the IRB & Ethics Research Committee of YRGCARE. All participants provided written informed consent prior to participation. All participants in the stavudine arm were switched to a tenofovir containing regimen at the end of follow as per the national HIV treatment guidelines.

### Statistical analysis

Demographics were reported as means and standard deviations, or medians with interquartile ranges as appropriate. Non-normal outcomes were log transformed to obtain a normal distribution. In line with logistic regression models, we used a logit transformation for the predicted probabilities based on the Framingham risk model. Lipid levels, glucose, insulin, HOMA-IR and FRS measurements over the 96 week period were analysed with a linear mixed model (estimated with restricted maximum likelihood) with a random intercept and a random effect for time. We included a quadratic term for time (i.e.  $\text{time}^2$ ), considering that outcomes are expected to level off at a certain point in time. Treatment arm, time,  $\text{time}^2$  and the interaction between treatment arm and both time and  $\text{time}^2$  were included as fixed effects together with a correction for age, sex, site of inclusion (South-Africa, Uganda or India), body mass index and viral load at baseline.  $p$  values for the interactions between treatment and both time and  $\text{time}^2$  were estimated with likelihood ratio tests. Likelihood ratio tests were chosen, as it allows estimation of one  $p$  value (per outcome) for both interactions. For these tests, models were refitted with maximum likelihood estimation [20]. The estimated mean values at week 0, 24 weeks, 48 weeks, 72 weeks and 96 weeks for all outcomes were displayed graphically (transformed back to the original scale when applicable). The trend over time (per month) per treatment arm was calculated for all outcomes. Results are presented as regression coefficients ( $\beta$ ) with 95% confidence intervals. Statistical analysis was done with SPSS version 24 (IBM SPSS Statistics for Windows, Version 24.0. Armonk, NY: IBM Corp.). Validity of the models was evaluated with residual analyses with SAS software version 9.4 (SAS Institute Inc., Cary, NC, USA).

### Results

The mean age of participants was 35.3 years, the majority were female (57.6%), 24.2% was married, 76.0% was employed and most were of African descent (91.8%). The median nadir CD4+ cell count was 206 cells/ $\mu\text{L}$  (IQR 124–272). There were no differences in demographics, CVD risk factors or HIV-related factors between the study arms or study sites at baseline (Table 1). Participant retention was similar in each arm, with an overall median follow-up time of 95.4 weeks (Interquartile range (IQR) 95.0–95.7 weeks). Viral suppression (< 50 copies/mL) was reached in 71.1% in the stavudine arm and 76.7% in the tenofovir arm at the end of follow up. In total, 12.2% had a follow-up time of less than 48 weeks. Alcohol use was the most frequently reported substance used, followed by smoking and illegal drug use.

Figure 1 shows the trend in lipid levels following treatment initiation (Fig. 1). Total-C, HDL-C and LDL-C increased over the course of 96 weeks with a sharper increase in the group receiving stavudine than in the group receiving tenofovir,  $p < 0.001$  for Total-C and HDL-C, and  $p = 0.036$  for LDL-C (Table 2, see Additional file 2: Table S2). TG levels decreased from week 24 in the group on tenofovir and the estimated mean at week 96 was almost identical to the estimated mean at baseline (1.148 mmol/L (95% CI 1.102–1.197) at baseline versus 1.154 mmol/L (95% CI 1.097–1.212) at week 96).

Glucose values were similar in both groups, with a steep increase in the first 48 weeks (from 4.63 mmol/L (95% CI 4.56–4.69) at baseline to 5.13 mmol/L (95% CI 5.06–5.20) at week 48) and values tended to level off from week 48 to reach 5.12 mmol/L (95% CI 5.05–5.31) at week 96 (see Fig. 2 for trend per treatment arm and Additional file 2: Table S2). Insulin increased over 96 weeks, with no difference detected between arms ( $p = 0.677$ , Table 2). The increase in insulin resistance per month (with HOMA-IR) was not different for participants on stavudine versus tenofovir ( $p = 0.698$ ; Table 2).

Framingham risk score rose from 1.90% (1.84–1.98%) at baseline to 2.06 (1.98–2.15%) at week 96 for the total group (see Fig. 3 for trend per treatment arm and Additional file 2: Table S2). FRS in the stavudine group was significantly lower at baseline than in the tenofovir group, 1.82% (95% CI 1.73–1.92) and 2.00% (95% CI 1.89–2.10) respectively,  $p = 0.013$ . The risk in the group on stavudine went up to 2.11% (95% CI 1.99–2.24) at week 96. The risk in the group on tenofovir decreased initially to 1.94% (95% CI 1.85–2.05) at week 48 to increase to 2.01% (95% CI 1.90–2.13) at week 96. The overall trend between the groups was not significantly different,  $p = 0.144$ .

Age, sex and BMI were associated with all lipid sub-components, glucose, insulin, HOMA-IR and FRS (Additional file 3: Table S3a–h). The 10-year CVD risk according to the FRS was almost double for males compared to females at week 96, 2.88% (95% CI 2.68–3.00) for males versus 1.50% (95% CI 1.42–1.58) for females,  $p < 0.001$ . Log viral load at baseline was associated with all lipid sub-components (with a higher log viral load linked to a lower Total-C, HDL-C and LDL-C) but not to glucose, insulin, HOMA-IR or FRS. Indian participants had a worse lipid profile and glucose homeostasis compared to their African counterparts. For example, at baseline Total-C was 4.38 mmol/L (95% CI 4.21–4.55) for the Indian site and 3.72 mmol/L (95% CI 3.66–3.79) for the South African site, and fasting glucose was

**Table 1 Demographics, HIV disease and cardiovascular disease risks of patients at baseline**

	All (n = 1067)	Stavudine (n = 533)	Tenofovir (n = 534)
Sex, female (n, %)	615 (57.6)	324 (60.8)	291 (54.5)
Age in years	35.3 (8.2)	35.5 (8.4)	35.0 (8.1)
Race (n, %)			
African	979 (91.8)	489 (91.7)	490 (91.8)
Indian	86 (8.1)	43 (8.1)	43 (8.1)
Other	2 (0.2)	1 (0.2)	1 (0.2)
Site (n, %)			
South Africa	600 (56.2)	300 (56.3)	300 (56.2)
Uganda	381 (35.7)	190 (35.6)	191 (35.8)
India	86 (8.1)	43 (8.1)	43 (8.1)
Married <sup>a</sup> (n, %)	139 (24.2)	69 (24.1)	70 (24.2)
Having children <sup>a</sup> (n, %)	492 (85.9)	243 (84.1)	249 (87.7)
Employed <sup>a</sup> (n, %)	434 (76.0)	220 (76.1)	214 (75.9)
CD4+ cell count (cells/ $\mu$ L) (median, IQR)	206 (124–272)	206 (128–274)	206 (123–270)
Log HIV viral load (copies/mL)	11.26 (1.61)	11.34 (1.64)	11.18 (1.58)
History of hypertension <sup>b</sup> (n, %)	59 (5.5)	28 (5.3)	31 (5.8)
History of diabetes mellitus <sup>b</sup> (n, %)	6 (0.6)	4 (0.8)	2 (0.4)
History of dyslipidemia <sup>b</sup> (n, %)	2 (0.2)	1 (0.2)	1 (0.2)
Current smoking <sup>c</sup> (n, %)	86 (15)	44 (15.3)	42 (14.7)
Current alcohol use <sup>c</sup> (n, %)	203 (35.4)	101 (35.1)	102 (35.8)
Current drug use <sup>c</sup> (n, %)	17 (3.0)	8 (2.8)	9 (3.2)
Systolic blood pressure (mmHg)	118.3 (13.2)	117.5 (13.5)	119.1 (12.8)
Diastolic blood pressure (mmHg)	72.9 (10.2)	72.5 (10.6)	73.4 (9.9)
Body mass index (kg/m <sup>2</sup> )	23.5 (4.4)	23.6 (4.6)	23.5 (4.2)
Follow-up time, median months, IQR	95.4 (95.0–95.7)	95.4 (95.0–95.7)	95.4 (95.1–95.8)
Total-C (mmol/L)	4.30 (1.02)	4.39 (1.11)	4.22 (0.93)
HDL-C (mmol/L)	1.32 (0.49)	1.37 (0.54)	1.27 (0.44)
LDL-C (mmol/L)	2.47 (0.86)	2.50 (0.93)	2.44 (0.79)
TG (mmol/L) (median, IQR)	1.00 (0.74–1.37)	1.00 (0.76–1.40)	0.98 (0.72–1.33)
Fasting glucose (mmol/L)	4.77 (0.97)	4.72 (0.64)	4.81 (1.20)
Fasting insulin (pmol/L) (median, IQR)	38.20 (25.70–55.56)	40.28 (27.09–57.64)	36.81 (24.31–54.17)
HOMA-IR (median, IQR)	1.13 (0.74–1.75)	1.18 (0.78–1.78)	1.09 (0.71–1.70)
Framingham risk score (%) (median, IQR)	1.86 (1.02–3.45)	1.90 (1.05–3.44)	1.82 (0.98–3.46)

Values in mean with standard deviation unless otherwise specified

HDL-C high density lipoprotein cholesterol, IQR interquartile range, LDL-C low density lipoprotein cholesterol, TG triglycerides; Total-C total cholesterol

<sup>a</sup> Data only available for the South African site, n=575 for marital status, n = 571 for employment status, n = 573 for having children

<sup>b</sup> History or use of medication

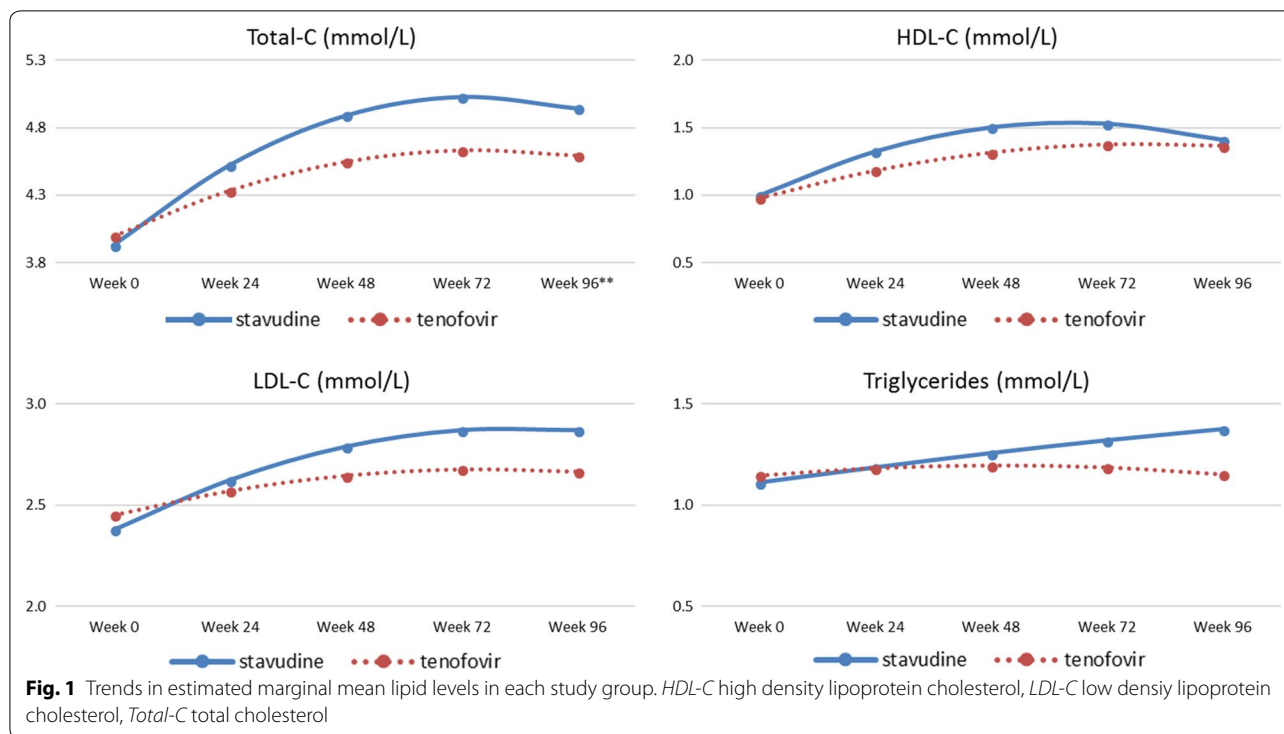
<sup>c</sup> Data only available for the South African site, n=574 for current smoking, n = 573 for current alcohol use, n = 562 for current drug use

5.05 mmol/L (95% CI 4.90–5.22) for the Indian site versus 4.45 mmol/L (95% CI 4.38–4.51) for the South African site,  $p < 0.001$  for both comparisons. In addition to these differences in baseline levels, Indian participants had a sharper increase in total-C, LDL-C and TG, and a larger decrease in HDL-C with treatment (See Additional file 3: Table S3a–d). The effect of stavudine and tenofovir on lipid components, as described above, was

similar for all three populations (South Africa, Uganda and India).

## Discussion

Initiation of low-dose stavudine and tenofovir with a backbone of lamivudine and efavirenz resulted in a rise in lipid levels with a worse lipid profile for stavudine



compared to tenofovir. Insulin resistance went up but there was no difference in trend between both groups. CVD risk was low in general and with no statistically significant difference between the groups over time.

Untreated HIV infection is characterized by an increase in TG and a decrease in both LDL-C and HDL-C [8, 21, 22]. The disturbance in lipid levels is likely a result of chronic inflammation that accompanies HIV infection [23]. Chronic inflammation influences the way lipids are metabolized and activated. Oxidized LDL and HDL may directly induce monocyte and endothelial cell activation, and this is related to the development of CVD [24].

Studies on initiation of ART have attributed both improvement, as well as deterioration, in lipid levels to ART [8, 22, 24–26]. A meta-analysis of cardiovascular risk factors in relation to HIV and ART in sub-Saharan Africa found that ART was associated with an increase in HDL-C and a decrease in TG, but also with an increase in LDL-C [2]. Liu et al. investigated changes in lipid levels during 3 years following ART initiation in Tanzania. They found an increase in LDL and HDL, and a decrease in TGs in the first 6 months. Between 6 months and 3 years HDL levels topped off and TG levels continued to increase [25]. Our results are broadly in line with these findings. We did not see a decrease in TG between treatment initiation and week 96, but the TG level in the group receiving tenofovir at week 96 was approximately

the same as the level before treatment initiation. Our results underline the importance of taking treatment duration into account.

There is no agreed threshold to define insulin resistance in an urban African population [27] but based on a study in an urban Ghanaian population, a HOMA-IR cut-off of 2.3 seems appropriate [28]. According to this definition, neither low-dose stavudine nor tenofovir resulted in significant insulin resistance. Stavudine’s mitochondrial toxicity is likely dose dependent [29, 30], and the low dose used in this study may account for the lack of impact on glucose metabolism. We can, however, not exclude the possibility that the drug’s deleterious effects could still occur with more extended durations of treatment.

Lipid levels and insulin resistance are increased in both treatment arms. This may partly rely on the effects of efavirenz, as this drug is known to alter lipid levels and glucose metabolism [11, 15]. Our findings underline the need for more ‘lipid-friendly’ ART, of which dolutegravir is a promising alternative [31].

CVD risk according to the 10-year FRS increased in the total group with 0.16% between baseline and week 96. This was statistically significant, but it’s questionable whether this slight increase over almost 2 years is clinically relevant. There was a trend towards a sharper increase in CVD risk in the group receiving



**Table 2** Estimated changes per month in lipid levels, insulin resistance and Framingham risk score

Variable	Increase per month Regression coefficient (95% CI) <sup>#</sup>	Increase per month <sup>2</sup> Regression coefficient (95% CI) <sup>#</sup>	<i>p</i>
Total-C (mmol/L)			
Stavudine	0.1275 (0.1035–0.1514)	–0.0037 (–0.0047 to –0.0027)	
Tenofovir	0.0719 (0.0621–0.0818)	–0.0020 (–0.0025 to –0.0016)	<0.001
HDL-C (mmol/L)			
Stavudine	0.0721 (0.0572–0.0870)	–0.0024 (–0.0031 to –0.0018)	
Tenofovir	0.0433 (0.0372–0.0495)	–0.0012 (–0.0014 to –0.0009)	<0.001
LDL-C (mmol/L)			
Stavudine	0.0516 (0.0324–0.0709)	–0.0013 (–0.0021 to –0.0005)	
Tenofovir	0.0254 (0.0175–0.0334)	–0.0007 (–0.0010 to –0.0004)	0.036
Log TG (mmol/L)			
Stavudine	0.0125 (–0.0017–0.0268)	–0.0001 (–0.0007–0.0005)	
Tenofovir	0.0073 (0.0014–0.0132)	–0.0003 (–0.0006 to –0.0001)	0.058
Glucose (mmol/L)			
Stavudine	0.0689 (0.0393–0.0980)	–0.0021 (–0.0033 to –0.0009)	
Tenofovir	0.0679 (0.0558–0.0800)	–0.0020 (–0.0026 to –0.0015)	0.991
Insulin (pmol/L)			
Stavudine	0.3941 (–1.3102–2.0984)	0.0045 (–0.0659–0.0749)	
Tenofovir	0.0042 (–0.7001–0.7086)	0.0231 (–0.0059–0.0521)	0.677
Log HOMA-IR			
Stavudine	0.0242 (0.0006–0.0479)	–0.0004 (–0.0014–0.0006)	
Tenofovir	0.0158 (0.0060–0.0255)	–0.0002 (–0.0006–0.0003)	0.756
Logit Framingham risk score*			
Stavudine	0.0100 (–0.0050–0.0251)	–0.0001 (–0.0008–0.0005)	
Tenofovir	–0.0047 (–0.0109–0.0016)	0.0002 (0.0000–0.0005)	0.144

CI confidence interval, HDL-C high density lipoprotein cholesterol, LDL-C low density lipoprotein cholesterol, OR odds ratio, TG triglycerides, Total-C total cholesterol

\*Data for South African site only

# The model includes adjustment for age, gender, site, body mass index and viral load

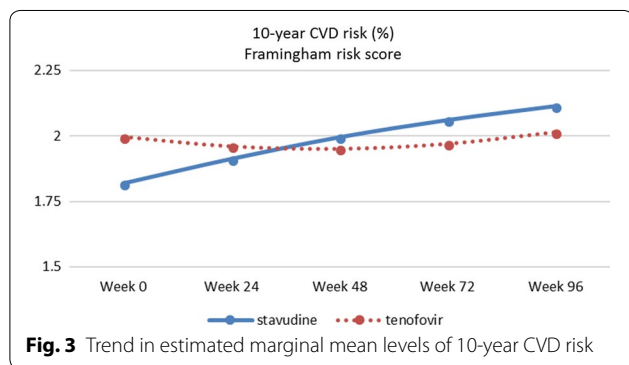
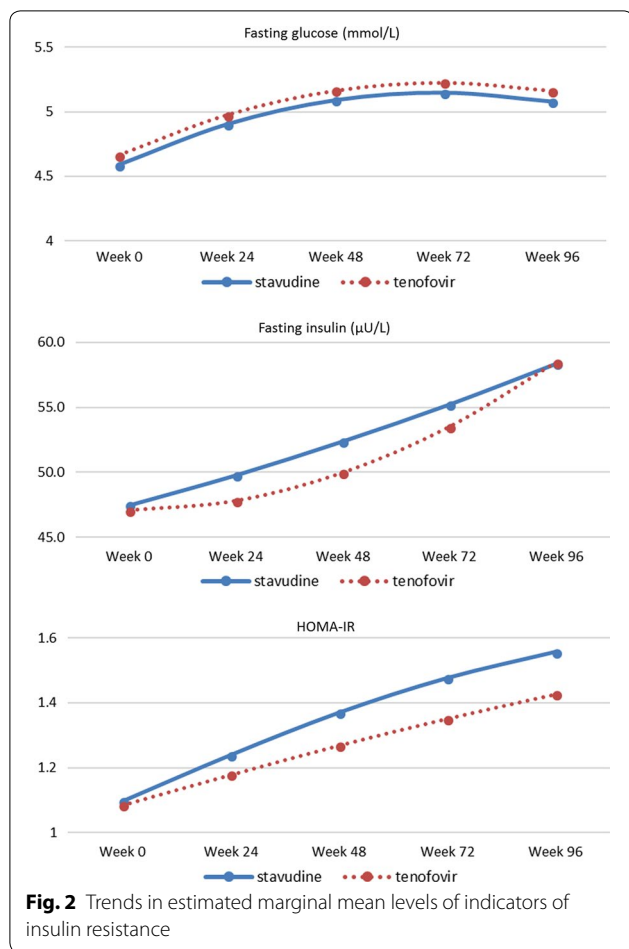
Month<sup>2</sup>, time was used as a quadratic term to take non-linearity into account. *p* values were estimated with a likelihood ratio test for both interactions. See “Methods” for details

stavudine, most likely reflecting the steeper increase in LDL-C and TG in this group compared to the group on tenofovir. At the same time, it would be important to consider the relative contribution of ART to well-known modifiable cardiovascular risk factors such as obesity, smoking, diet, and physical inactivity.

Indian participants had substantially worse lipid profiles and glucose homeostasis compared to the African participants. This is a well-known phenomenon that is likely dependent on genetic factors and lifestyle factors such as being underweight during infancy, diet and physical activity [32–34].

Strengths of the study are the large, representative sample including participants from three countries, the randomized design, the standardized and regular assessment of lipids, glucose and insulin, and the follow up duration of almost 2 years. However, some limitations need to be recognized. Information on socio-demographics,

alcohol use, drug use and smoking was only collected for the South African site, relied on patient reporting as opposed to biochemical measures, and only at baseline. No information on family history of CVD was collected, so we could not quantify CVD risk with other CVD risk prediction scores such as the Data collection on Adverse events of Anti-HIV Drugs (D:A:D) score, which is considered to be a more accurate risk prediction tool for HIV-infected populations than the FRS [35]. Also, we could not examine effects of the metabolic syndrome as waist circumference had not been measured. In line with an intention-to-treat approach for clinical trials, we only corrected for viral load at baseline, even though viral load at follow-up was available in the data. Both adherence and the proportion of participants with suppressed viral load between treatment groups were approximately equal. We therefore assume that any bias is small. Finally, the study did not include an HIV-negative control group



to compare our findings to age-related, HIV-unrelated changes in lipid levels and insulin resistance over time.

## Conclusion

This study showed that low-dose stavudine has more deleterious effects on lipids than tenofovir. However, the impact of stavudine on this short term appears to be small, and it's questionable whether the increase in lipid

levels is clinically relevant in this relatively young population with a low CVD risk. The need to monitor lipid and glucose levels has to be determined using CVD risk calculators that take other risk factors like age and hypertension into account. There should be extra awareness for CVD risk prevention in the Indian population. We recommend to measure lipids and glucose at the earliest a year after treatment initiation, as levels change substantially following treatment initiation.

## Additional files

**Additional file 1: Table S1.** Title: Laboratory methods. Description of data: this table includes details on the measurement methods of lipids, glucose, insulin, HIV viral load and CD4+ cell count.

**Additional file 2: Table S2.** Title: Estimated means with 95% confidence intervals per outcome. Description of data: This table presents estimates of the means for each treatment group at 4 follow-up measurements based on a linear mixed model with correction for age, sex, site of inclusion (South-Africa, Uganda or India), body mass index and viral load at baseline (see "Methods" for details).

**Additional file 3: Table S3.** Title: Generalized linear mixed models. Description of data: generalized linear mixed models for the outcomes total cholesterol, HDL cholesterol, LDL cholesterol, triglycerides, glucose, insulin, HOMA-IR and Framingham risk score.

## Authors' contributions

MM, AK, NK and FV were involved in data collection. AV, MC and FV designed this analysis, AV, MC and PZ analyzed and interpreted the patient data. AV and MM wrote the manuscript. All co-authors contributed to the final manuscript. All authors read and approved the final manuscript.

## Author details

<sup>1</sup> Wits Reproductive Health and HIV Institute, Faculty of Health Sciences, University of Witwatersrand, Johannesburg, South Africa. <sup>2</sup> Julius Global Health, Julius Center for Health Sciences and Primary Care, University Medical Center Utrecht, Utrecht University, Utrecht, The Netherlands. <sup>3</sup> Department of Internal Medicine and Infectious Diseases, University Medical Center Utrecht, Utrecht University, Utrecht, The Netherlands. <sup>4</sup> Division of Epidemiology and Biostatistics, School of Public Health, Faculty of Health Sciences, University of the Witwatersrand, Johannesburg, South Africa. <sup>5</sup> Infectious Diseases Institute, Makerere University, Kampala, Uganda. <sup>6</sup> YRG CARE Medical Centre, CART Clinical Research Site, Voluntary Health Services, Chennai, India.

## Acknowledgements

Not applicable.

## Competing interests

The authors declare that they have no competing interests.

## Availability of data and materials

The datasets used and/or analysed during the current study are available from the corresponding author on reasonable request.

## Consent for publication

Not applicable.

## Ethics approval and consent to participate

The study was approved by the Human Ethics Research Committee of the University of the Witwatersrand, ethics clearance number 111112, the Research and Ethics Committee of the Joint Clinical Research Centre, Uganda, clearance number HS 1219, and the IRB & Ethics Research

Committee of YRGCARE. All participants provided written informed consent prior to participation.

#### Funding

Bill and Melinda Gates Foundation. The foundation was in not involved in the design of this secondary analysis, interpretation of the data nor in writing the manuscript.

#### Publisher's Note

Springer Nature remains neutral with regard to jurisdictional claims in published maps and institutional affiliations.

Received: 6 August 2018 Accepted: 7 December 2018

Published online: 14 December 2018

#### References

- GBD 2016 Causes of Death Collaborators. Global, regional, and national age-sex specific mortality for 264 causes of death, 1980–2016: a systematic analysis for the Global Burden of Disease Study 2016. *Lancet*. 2017;390(10100):1151–210.
- Dillon DG, Gurdasani D, Riha J, Ekoru K, Asiki G, Mayanja BN, et al. Association of HIV and ART with cardiometabolic traits in sub-Saharan Africa: a systematic review and meta-analysis. *Int J Epidemiol*. 2013;42(6):1754–71.
- Kingery JR, Alfred Y, Smart LR, Nash E, Todd J, Naguib MR, et al. Short-term and long-term cardiovascular risk, metabolic syndrome and HIV in Tanzania. *Heart*. 2016;102(15):1200–5.
- Nduka CU, Stranges S, Sarki AM, Kimani PK, Uthman OA. Evidence of increased blood pressure and hypertension risk among people living with HIV on antiretroviral therapy: a systematic review with meta-analysis. *J Hum Hypertens*. 2016;30(6):355–62.
- Nou E, Lo J, Grinspoon SK. Inflammation, immune activation, and cardiovascular disease in HIV. *AIDS*. 2016;30(10):1495–509.
- Freiberg MS, Chang CC, Kuller LH, Skanderson M, Lowy E, Kraemer KL, et al. HIV infection and the risk of acute myocardial infarction. *JAMA Internal Med*. 2013;173(8):614–22.
- Zanni MV, Schouten J, Grinspoon SK, Reiss P. Risk of coronary heart disease in patients with HIV infection. *Nat Rev Cardiol*. 2014;11(12):728–41.
- Dube MP, Cadden JJ. Lipid metabolism in treated HIV infection. *Best Pract Res Clin Endocrinol Metab*. 2011;25(3):429–42.
- Clotet B, Negro E. HIV protease inhibitors and dyslipidemia. *AIDS Rev*. 2003;5(1):19–24.
- Stein JH. Dyslipidemia in the era of HIV protease inhibitors. *Prog Cardiovasc Dis*. 2003;45(4):293–304.
- Sinxadi PZ, McIlleron HM, Dave JA, Smith PJ, Levitt NS, Haas DW, et al. Plasma efavirenz concentrations are associated with lipid and glucose concentrations. *Medicine (Baltimore)*. 2016;95(2):e2385.
- Fleischman A, Johnsen S, Systrom DM, Hrovat M, Farrar CT, Frontera W, et al. Effects of a nucleoside reverse transcriptase inhibitor, stavudine, on glucose disposal and mitochondrial function in muscle of healthy adults. *Am J Physiol Endocrinol Metab*. 2007;292(6):E1666–73.
- Gallant JE, Staszewski S, Pozniak AL, DeJesus E, Suleiman JM, Miller MD, et al. Efficacy and safety of tenofovir DF vs stavudine in combination therapy in antiretroviral-naïve patients: a 3-year randomized trial. *JAMA*. 2004;292(2):191–201.
- George JA, Venter WD, Van Deventer HE, Crowther NJ. A longitudinal study of the changes in body fat and metabolic parameters in a South African population of HIV-positive patients receiving an antiretroviral therapeutic regimen containing stavudine. *AIDS Res Hum Retroviruses*. 2009;25(8):771–81.
- Mouton JP, Cohen K, Maartens G. Key toxicity issues with the WHO-recommended first-line antiretroviral therapy regimen. *Expert Rev Clin Pharmacol*. 2016;9(11):1493–503.
- World HO. Antiretroviral therapy for HIV infection in adults and adolescents. Recommendations for a public health approach. 2010 revision. 2010.
- Venter WDF, Kambugu A, Chersich MF, Becker S, Hill A, et al. Efficacy and safety of tenofovir disoproxil fumarate versus low-dose stavudine over 96 weeks: a multi-country randomised, non-inferiority trial. *J Acquir Immune Defic Syndr*. 2018. <https://doi.org/10.1097/QAI.0000000000001908>.
- Wallace TM, Levy JC, Matthews DR. Use and abuse of HOMA modeling. *Diabetes Care*. 2004;27(6):1487–95.
- Framingham Heart Study 10-year CVD risk score. <https://www.framinghamheartstudy.org/fhs-risk-functions/cardiovascular-disease-10-year-risk/>. Accessed 27 April 2018.
- Roy J. *Applied Longitudinal Analysis*, Second Edition, by G. M. Fitzmaurice, N. M. Laird, and J. H. Ware. *J Biopharm Stat*. 2013;23(2):491–2.
- Grunfeld C, Pang M, Doerrler W, Shigenaga JK, Jensen P, Feingold KR. Lipids, lipoproteins, triglyceride clearance, and cytokines in human immunodeficiency virus infection and the acquired immunodeficiency syndrome. *J Clin Endocrinol Metab*. 1992;74(5):1045–52.
- Dave JA, Levitt NS, Ross IL, Lacerda M, Maartens G, Blom D. Anti-retroviral therapy increases the prevalence of dyslipidemia in South African HIV-infected patients. *PLoS ONE*. 2016;11(3):e0151911.
- Miedema F, Hazenberg MD, Tesselar K, van Baarle D, de Boer RJ, Borghans JA. Immune activation and collateral damage in AIDS pathogenesis. *Front Immunol*. 2013;26(4):298.
- Funderburg NT, van Mehta NN. Lipid abnormalities and inflammation in HIV infection. *Curr HIV/AIDS Rep*. 2016;13(4):218–25.
- Liu E, Armstrong C, Spiegelman D, Chalamilla G, Njelekela M, Hawkins C, et al. First-line antiretroviral therapy and changes in lipid levels over 3 years among HIV-infected adults in Tanzania. *Clin Infect Dis*. 2013;56(12):1820–8.
- Nduka C, Sarki A, Uthman O, Stranges S. Impact of antiretroviral therapy on serum lipoprotein levels and dyslipidemias: a systematic review and meta-analysis. *Int J Cardiol*. 2015;15(199):307–18.
- Tang Q, Li X, Song P, Xu L. Optimal cut-off values for the homeostasis model assessment of insulin resistance (HOMA-IR) and pre-diabetes screening: developments in research and prospects for the future. *Drug Discov Ther*. 2015;9(6):380–5.
- Meeks KA, Stronks K, Adeyemo A, Addo J, Bahendeka S, Beune E, et al. Peripheral insulin resistance rather than beta cell dysfunction accounts for geographical differences in impaired fasting blood glucose among sub-Saharan African individuals: findings from the RODAM study. *Diabetologia*. 2017;60(5):854–64.
- Hill A, Ruxrungtham K, Hanvanich M, Katlama C, Wolf E, Soriano V, et al. Systematic review of clinical trials evaluating low doses of stavudine as part of antiretroviral treatment. *Expert Opin Pharmacother*. 2007;8(5):679–88.
- McComsey GA, Lo Re V 3rd, O'Riordan M, Walker UA, Lebrecht D, Baron E, et al. Effect of reducing the dose of stavudine on body composition, bone density, and markers of mitochondrial toxicity in HIV-infected subjects: a randomized, controlled study. *Clin Infect Dis*. 2008;46(8):1290–6.
- Quercia R, Roberts J, Martin-Carpenter L, Zala C. Comparative changes of lipid levels in treatment-naïve, HIV-1-infected adults treated with dolutegravir vs. efavirenz, raltegravir, and ritonavir-boosted darunavir-based regimens over 48 weeks. *Clin Drug Investig*. 2015;35(3):211–9.
- Anand SS, Yusuf S, Vuksan V, Devanens S, Teo KK, Montague PA, et al. Differences in risk factors, atherosclerosis and cardiovascular disease between ethnic groups in Canada: the study of health assessment and risk in ethnic groups (SHARE). *Indian Heart J*. 2000;52(7 Suppl):S35–43.
- Frank AT, Zhao B, Jose PO, Azar KM, Fortmann SP, Palaniappan LP. Racial/ethnic differences in dyslipidemia patterns. *Circulation*. 2014;129(5):570–9.
- Patel SA, Shivashankar R, Ali MK, Anjana RM, Deepa M, Kapoor D, et al. Is the "South Asian phenotype" unique to South Asians?: comparing cardiometabolic risk factors in the CARRS and NHANES studies. *Glob Heart*. 2016;11(1):89–96.e3.
- Friis-Moller N, Ryom L, Smith C, Weber R, Reiss P, Dabis F, et al. An updated prediction model of the global risk of cardiovascular disease in HIV-positive persons: the Data-collection on Adverse Effects of Anti-HIV Drugs (D:A:D) study. *Eur J Prev Cardiol*. 2016;23(2):214–23.