



RESEARCH

Open Access

# A stabilized HIV-1 envelope glycoprotein trimer fused to CD40 ligand targets and activates dendritic cells

Mark Melchers<sup>1</sup>, Katie Matthews<sup>2</sup>, Robert P de Vries<sup>1</sup>, Dirk Eggink<sup>1</sup>, Thijs van Montfort<sup>1</sup>, Ilja Bontjer<sup>1</sup>, Carolien van de Sandt<sup>1</sup>, Kathryn David<sup>2</sup>, Ben Berkhout<sup>1</sup>, John P Moore<sup>2</sup> and Rogier W Sanders<sup>1,2\*</sup>

## Abstract

**Background:** One reason why subunit protein and DNA vaccines are often less immunogenic than live-attenuated and whole-inactivated virus vaccines is that they lack the co-stimulatory signals provided by various components of the more complex vaccines. The HIV-1 envelope glycoprotein complex (Env) is no exception to this rule. Other factors that limit the induction of neutralizing antibodies against HIV-1 lie in the structure and instability of Env. We have previously stabilized soluble trimeric mimics of Env by introducing a disulfide bond between gp120 and gp41 and adding a trimer stabilizing mutation in gp41 (SOSIP.R6 gp140).

**Results:** We further stabilized the SOSIP.R6 gp140 using a GCN4-based isoleucine zipper motif, creating SOSIP.R6-IZ gp140. In order to target SOSIP.R6-IZ to immune cells, including dendritic cells, while at the same time activating these cells, we fused SOSIP.R6-IZ to the active domain of CD40 ligand (CD40L), which may serve as a 'cis-adjuvant'. The Env component of the SOSIP.R6-IZ-CD40L fusion construct bound to CD4 and neutralizing antibodies, while the CD40L moiety interacted with CD40. Furthermore, the chimeric molecule was able to signal efficiently through CD40 and induce maturation of human dendritic cells. Dendritic cells secreted IL-6, IL-10 and IL-12 in response to stimulation by SOSIP.R6-IZ-CD40L and were able to activate naïve T cells.

**Conclusions:** Chimeric HIV-1 gp140 - CD40L trimers can target and activate dendritic cells. Targeting and activating immune cells using CD40L and other 'cis-adjuvants' may improve subunit protein vaccine immunogenicity for HIV-1 and other infectious diseases.

## Background

A vaccine against HIV-1 infection remains elusive. Live-attenuated SIV/HIV vaccines have consistently elicited protective immune responses in monkey models, but this approach is generally considered to be unsafe for human use [1]. Despite recent setbacks, recombinant viral vectors such as adenovirus that express HIV-1 proteins continue to be evaluated, but they do not elicit neutralizing antibody (NAb) responses efficiently [2]. Mucosal immunity against HIV-1 has also proven hard to elicit by any vaccine approach, a substantial problem considering that the virus is sexually transmitted [3].

Inducing high titers of broadly active NAbs is a major goal of many HIV-1 vaccine approaches that has not yet been achieved. The most common approaches are based around protein subunit immunogens that mimic the native viral envelope glycoprotein complex (Env), which is the only target for NAbs. Unfortunately, most anti-Env antibodies are unable to neutralize primary HIV-1 isolates. Vaccines based on monomeric gp120 proteins failed to confer protection in efficacy trials [4,5]. The difficulty in inducing NAbs is in part rooted in the structure of the Env complex, which has evolved multiple defenses that limit the induction and binding of such antibodies. Thus, various structural devices shield otherwise vulnerable conserved neutralization epitopes such as the receptor binding sites [6-8], and highly immunogenic but non-neutralizing epitopes exposed on non-functional forms of Env serve as immune decoys [9]. Env sequence variation is another

\* Correspondence: [r.w.sanders@amc.uva.nl](mailto:r.w.sanders@amc.uva.nl)

<sup>1</sup>Laboratory of Experimental Virology, Department of Medical Microbiology Center for Infection and Immunity Amsterdam (CINIMA), Netherlands  
Full list of author information is available at the end of the article

major obstacle for vaccine development that has not been solved [10].

In common with the approaches of other research groups, we have engineered recombinant versions of the native, trimeric HIV-1 Env complex to try to overcome some of these problems. Our approach has been to stabilize the gp120-gp41 (SOS gp140; [11]) and the gp41-gp41 (SOSIP gp140; [12]) interactions, so as to maintain the complex in a trimeric configuration after cleavage of the gp120-gp41 linkage. In general, Env trimers of various designs, including SOSIP gp140s, are superior to gp120 monomers for NAb induction [13-15]. Unfortunately, none of the improvements has yet been sufficient to solve the 'neutralizing antibody problem'.

One general limitation to subunit protein vaccines and DNA plasmid vaccines that encode such proteins is their poor immunogenicity compared to live-attenuated or inactivated viral vaccines. Moreover, the HIV-1 Env proteins are particularly poor immunogens. Thus, the anti-Env titers in vaccinated individuals are relatively low compared to those raised against other protein antigens, and they decay with an unusually short half-life of 30-60 days [16]. It was recently shown that Env proteins predominantly induce short-lived memory B cell-dependent plasma Abs in the settings of HIV-1 envelope vaccination and HIV-1 infection [17]. Other factors such as the magnitude and duration of the antibody response, affinity maturation and the induction of B cell memory are also relevant to the design of an effective B-cell vaccine against HIV-1. The poor performance of Env-based vaccines in these areas is rooted in the structure of the Env complex and its interaction with the immune system. By providing additional stimulatory signals to B cells it seems possible not only to increase the extent and duration of antibody production, but also improve their quality, probably because the increase in B cell stimulation promotes antibody affinity maturation [18]. For example, B cell stimulation through Toll-like receptors (TLRs) improves both the affinity and the neutralizing activity of antibodies against respiratory syncytial virus (RSV) [18].

The addition of co-stimulatory molecules is one way to enhance or tune the immune response to antigens. Covalently linking of adjuvants or co-stimulatory molecules to the antigen appears to be significantly superior to simply administering them as a mixture [19,20]. A few attempts to conjugate HIV-1 Env immunogens to co-stimulatory molecules to improve antibody responses have been made, but with some success [21-23]. Another approach to the problem, using model antigens, showed that antigen targeting to dendritic cells (DC) via lectins such as DC-SIGN, DEC205, DCIR2 or Clec12A can augment antigen-specific immune responses [24-27]. This kind of strategy has not yet been tested using HIV-1 Env.

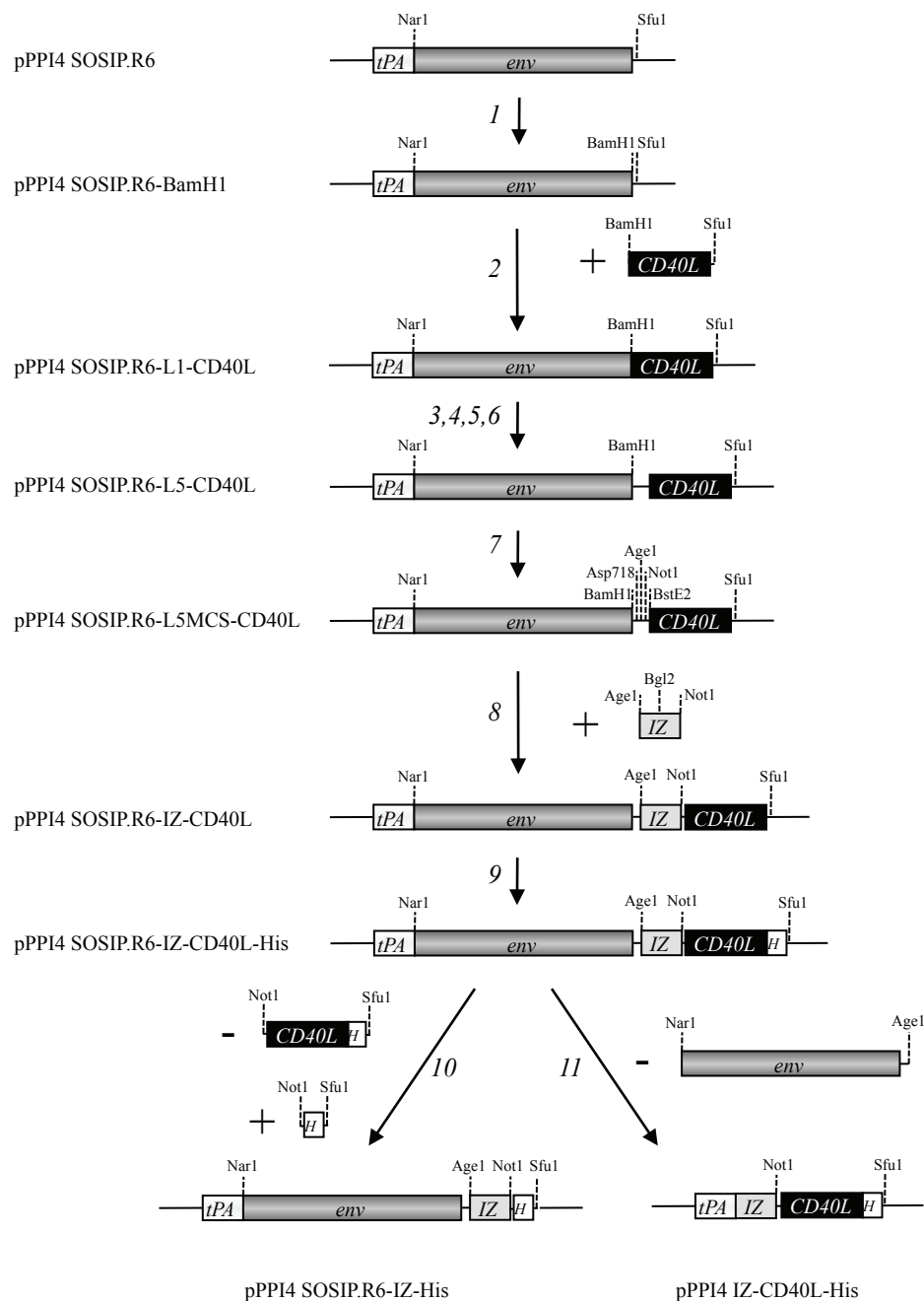
The intent of this study was to target trimeric HIV-1 Env proteins directly to DC while simultaneously supplying a powerful stimulatory signal to these cells [28]. To do this, we fused the Env proteins to CD40L, a TNF-superfamily member that is normally expressed on T helper cells. By binding to CD40 on DC and B cells, CD40L provides stimulatory signals that are a key element in T cell help. CD40L promotes the antigen-presenting function and migratory capacities of antigen-presenting cells (APCs), enhances the production of pro-inflammatory cytokines such as IL-12 and TNF $\alpha$ , and helps induce memory T cells [29-31]. Furthermore, CD40L activates humoral immunity by promoting the proliferation of B cells, their differentiation to antibody-secreting plasma cells and memory B cells, their selection in germinal centers, and Ig class-switching [31,32]. CD40L and agonistic anti-CD40 antibodies have been used successfully as adjuvants in various immunization models [33-40], as well as in HIV-1 virus-like particle based approaches [41-43]. Finally, its use in humans appears to be safe [44]. Here, we describe the design and construction of a soluble trimeric gp140-CD40L fusion protein that binds CD4, anti-Env NABs and CD40, induces signaling through CD40 and activates DC *in vitro*.

## Materials and methods

### Plasmid construction

The pPPI4 plasmid (Progenics Pharmaceuticals Inc., Tarrytown, NY) containing a codon-optimized stabilized gp140 gene that is based on of the subtype B, R5 isolate JR-FL has been described elsewhere (SOSIP.R6 gp140; [11,12,45]). To facilitate subsequent cloning steps, we first introduced a BamHI site at the C-terminus of SOSIP.R6 gp140. This modification changed the most C-terminal amino acid of the natural gp140 protein (Y681I), and added one more amino acid (682L). These changes did not adversely affect the folding and secretion of SOSIP.R6 gp140 proteins (data not shown). The cloning steps are indicated in Figure 1.

The gene plasmids encoding the functional domain (amino acids 118 to 261) of murine CD40L was amplified from the mouse fibroblast cell line J558 (American Type Culture Collection, Rockville, MD), using the Expand PCR system according to the manufacturer's instructions (Roche, Mannheim, Germany). The PCR was performed with sense and antisense primers (5'mCD40L1BamHI [5'-CTCATACTCATAGGATCCTCGATCCTCAAATTGCAGC-3'] and 3'mCD40LSfuI [5'-CTCATACTCATATTCGAATTAGAGTTTGAGTAAGCC-3']). The PCR product was cloned downstream of the SOSIP.R6 ORF in pPPI4-SOSIP.R6 using BamHI and SfuI, creating pPPI4-SOSIP.R6-L1-CD40L. The plasmids pPPI4-SOSIP.R6-L2-CD40L and pPPI4-SOSIP.R6-L3-CD40L were created by PCR amplification using pPPI4-SOSIP.R6-L1-CD40L as the



**Figure 1 Cloning strategy.** The following steps were carried out to obtain the constructs used in subsequent experiments: 1. Introduction of a unique BamHI site at the C-terminus of the *env* gp140 sequences in the pPPI4 SOSIP.R6 plasmid; 2. Insertion of the sequences encoding mouse CD40L amino acids 118-261, amplified from J558 cells and cloned using BamHI and SfuI; 3,4,5,6. Insertion of various linkers between *env* and CD40L sequences, generated by PCR and cloned using BamHI and SfuI; 7. Introduction of the unique restriction sites for Asp718, AgeI, NotI and BstE2 in the linker (L5) between *env* and CD40L; 8. Insertion of the sequences encoding an isoleucine zipper (IZ) based trimerization domain, generated by annealing of oligonucleotides and cloned using AgeI and NotI; 9. Insertion of sequences encoding an oligohistidine tag at the C-terminus of CD40L; 10. Deletion of the sequences encoding CD40L to generate a plasmid encoding SOSIP.R6 gp140 fused to the IZ domain followed by an oligohistidine tag; 11. Deletion of the *env* sequences, generating a construct encoding a trimeric CD40L control molecule. The non codon-optimized mouse CD40L sequences were replaced by codon-optimized sequences for mouse and human CD40L using NotI and SfuI (not shown in the figure). All constructs were verified by sequencing. The codon-optimized constructs were used in all following experiments, mouse or human depending on the application. More details are provided in the Materials and Methods section.

template and the following 5' primers and, in both cases, 3'mCD40LSfu1: 5'mCD40L2BamH1: [5'-CTCATACTCA-TAGGATCCTCGGTGGAGGTAGCGATCCTCAA ATT GCAGC-3']; 5'mCD40L3BamH1: [5'-CTCATACTCA-TAGGATCCTCGGTGGAGGTAGCGGTGGAGG TGAT CCTCAAATTGCAGC-3']. The resulting BamH1-Sfu1 fragments containing the linker sequences and amino acids 118-261 from CD40L were then cloned behind the SOSIP.R6 gp140 sequences.

The pPPI4-SOSIP.R6-L4-CD40L plasmid was generated by PCR amplification, with pPPI4-SOSIP.R6-L3-CD40L as the template and primers 5'mCD40L4BamH1: [5'-CTCA-TACT CATAGGATCCTCGGCGGTGGCGGTAGCGGT GGTGGAGGTAGC-3'] and 3'mCD40LSfu1. Plasmid pPPI4-SOSIP.R6-L5-CD40L was generated by PCR amplification using pPPI4-SOSIP.R6-L4-CD40L as a template and primers 5'mCD40L5BamH1: [5'-CTCATACTCA-TAGG ATCCTCGGTGGAGGTGGAAGCGGCGGTGG CCGT-3'] and 3'mCD40LSfu1. These steps created the following spacers between SOSIP.R6 and mCD40L: L1: No spacer; L2: GGG; L3: GGGSGGG; L4: GGGSGGG GSGGG; L5 GGGSGGGSGGGSGGG.

To facilitate subsequent cloning steps, the linker region of pPPI4-SOSIP.R6-L5-CD40L between Env and CD40L was further modified to introduce the restriction sites for Asp718, Age1, Not1 and BstE2 (pPPI4-SOSIP.R6-L5MCS-CD40L), creating the 18 amino acid linker sequence GGGGTGGGGTGGGGRRGGG (non-silent changes are underlined). The resulting sequence modifications did not adversely affect the secretion of the SOSIP.R6-L5-CD40L fusion protein (data not shown).

A DNA fragment encoding a codon-optimized isoleucine zipper motif (IZ) based on GCN4 (AGAATGAA GCAGATCGAGGACAAGATCGAGGAGATCCTGAG-CAAGATCTACCACA TCGAGAACGAGATCGCCA-GAATCAAGAAGCTGATCGGCGAGAGA, which encodes the peptide sequence RMKQIEDKIEEILSKIY-HIENEIARIKKLIGER [46]), was annealed using two 5'-sense oligonucleotides, 5'IZ1Age1Bgl2: 5'CCGGTA-GAATGAAGCAGATCGAGGA CAAGATCGAGGA-GATCCTGAGCAA-3' and 5'IZ2Bgl2Not1: 5'-GATCTA CCACATCGAGAAC GAGATCGCCAGAATCAA-GAAGCTGATCGGCGAGAGAGGC-3' and the two antisense oligonucleotides 3'IZ1Age1Bgl2: 5'-GATCTTG CTCAGGATCTCCTCGATCTTGTCTCCTCGATCT GCT TCATTCTA-3' and 3'IZ2Bgl2Not1: 5'-GGCCGCT CTCTCGCCGATCAGCTTCTTGATTC TGGCGAT CTCGTTCTCGATGTGGTA-3', leading to a double stranded DNA fragment with a 5'AgeI site (single underline), a Bgl2 site (double underlined) and a 3' NotI site (dotted underline). This fragment was cloned into pPPI4-SOSIP.R6-L5MCS-CD40L using AgeI and NotI, leaving a linker of 11 amino acids (GGGGTGGGGTG) between the SOSIP.R6 gp140 and IZ moieties, and a

6-amino acid linker (GGRGGG) between IZ and CD40L. Finally, we added a C-terminal oligo-Histidine tag (HHHHHHHH) using the Quickchange mutagenesis kit (Stratagene, La Jolla, CA).

We also created a similar plasmid without the sequences encoding CD40L (pPPI4-SOSIP.R6-IZ), by replacing the NotI-Sfu1 fragment (CD40L) by one containing only the oligo-Histidine tag [47]. Codon-optimized genes encoding the extracellular domain of the human and mouse versions of CD40L (amino acids 120 to 261) were synthesized (Mr. gene, Regensburg, Germany) and cloned behind SOSIP.R6-IZ using NotI and Sfu1. The pPPI4-IZ-CD40L plasmid encoding trimeric CD40L without gp140 was constructed by cutting out the Env-encoding sequences from pPPI4-SOSIP.R6-IZ-hCD40L using NarI and AgeI, followed by Klenow blunting and self-ligation.

The sequence integrity of all clones was confirmed prior to use. The amino acid numbering of SOSIP.R6 gp140 is based on HXB2 Env.

#### Cell culture and transient transfection

293T cells were transiently transfected with Env using linear polyethylenimine as described previously [48]. Briefly, Env-encoding plasmids (or plasmid DNA for mock transfections) were diluted to 0.1 × the culture volume and mixed with Dulbecco's Modified Eagle's Medium (Invitrogen, Breda, The Netherlands). A volume of 0.15 × the culture volume of a 1 mg/ml solution of linear Polyethylenimine (PEI, MW 25,000, Polysciences Europe GmbH, Eppenheim, Germany) was then added and mixed. After incubation for 20 min, the DNA-PEI mix was added to the cells for 4 h before replacement with the same culture medium supplemented with 10% fetal bovine serum (FBS) (HyClone, Perbio, Etten-Leur, The Netherlands), penicillin, streptomycin, and MEM non-essential amino acids (0.1 mM, Invitrogen). Env-containing supernatants were harvested 48 h after transfection. All supernatants used for functional assays were concentrated 60x.

#### Concentrating the proteins

Cell supernatants from transient transfections were concentrated using Amicon Ultra-15 Centrifugal Filter Units with 100 kD MWCO filter (Millipore, Amsterdam Zuidoost, The Netherlands), except for IZ-CD40L for which a 30 kD MWCO filter was used due to its lower molecular weight. The concentration was performed according to the manufacturer's instructions.

#### SDS-PAGE, Blue Native PAGE and Western blotting

SDS-polyacrylamide gel electrophoresis (SDS-PAGE) and Western blotting were performed according to established protocols using the anti-gp120 V3 loop MAb PA-1 (1:20,000; final concentration, 50 ng/ml; Progenics)



[49] and horseradish peroxidase-labeled goat-anti-mouse IgG (1:5,000, Jackson ImmunoResearch, Suffolk, UK). Luminometric detection of envelope glycoproteins was performed using the western lightning ECL system (PerkinElmer, Groningen, The Netherlands). Blue Native (BN)-PAGE was carried out with minor modifications to the published method [12,50,51]. Thus, purified protein samples or cell culture supernatants were diluted with an equal volume of a buffer containing 100 mM 4-(N-morpholino) propane sulfonic acid (MOPS), 100 mM Tris-HCl, pH 7.7, 40% glycerol, 0.1% Coomassie blue, just prior to loading onto a 4 to 12% Bis-Tris NuPAGE gel (Invitrogen). Typically, gel electrophoresis was performed for 3 hrs at 125 V using 50 mM MOPS, 50 mM Tris, pH 7.7 as running buffer.

#### Gel filtration analysis

Concentrated culture supernatants, derived from transiently transfected 293T cells were fractionated on a Superose-6 column in PBS using an AKTA FPLC, (GE Healthcare Lifesciences, Diegem, Belgium), followed by analysis by standard SDS-PAGE and western blot using MAb PA-1 (Progenics).

#### Immunoprecipitation assays

Supernatants were concentrated 25-fold from 293T cells transiently transfected with the SOSIP.R6-IZ-CD40L construct and incubated overnight at 4°C with MAbs, CD4-IgG2 or mouse CD40-Fc in a 500 µl volume containing 100 µl of a 5-fold concentrated RIPA buffer (250 mM Tris-HCl, pH 7.4, 750 mM NaCl, 5% NP-40, 12.5 mM Na-deoxycholate, Complete Protease Inhibitor Cocktail (Roche, Mannheim, Germany)). Next, 50 µl of protein G-coated agarose beads (Pierce Inc./Thermo Fisher Scientific, Etten-Leur, The Netherlands) was added and rotation-mixed for 2 hrs at 4°C. The beads were washed extensively with ice-cold 1x RIPA buffer containing 0.01% Tween 20. Proteins were eluted by heating the beads at 100°C for 5 min in 50 µl of SDS-PAGE loading buffer supplemented with 100 mM dithiothreitol (DTT). The immunoprecipitated proteins were fractionated on 8% SDS-PAGE gels (Invitrogen) at 125 V for 2 h. For exact reagents used see "reagents" section.

#### CD40 reporter assays

CD40-293-SEAP cells were used that stably express CD40. In addition, they are stably transfected with the pNiFty2 plasmid (Invivogen, San Diego, CA, USA), which contains the secreted embryonic alkaline phosphatase (SEAP) gene under the control of the ELAM-1 promoter containing five NF-κB binding sites. Cells were seeded in 96-well plates ( $2 \times 10^4$  cells per well) in Optimem (Invitrogen, Breda, The Netherlands). Concentrated supernatant containing the various Env-CD40L

variants were serially diluted in Optimem and added to the cells. The cells were stimulated for 24 hours at 37°C/5% CO<sub>2</sub>. The same dilution of mock-transfected supernatant served as a negative control. The positive control was a similar dilution of IZ-CD40L containing concentrated supernatant. The production of secreted embryonic alkaline phosphatase (SEAP) was measured according to the manufacturer's protocol (Quanti-blue, InvivoGen). In short, 5 µl of cell-free culture supernatant was transferred after 24 h to a new 96-well plate, mixed with 200 µl Quanti-Blue (QB) (37°C) and incubated for 18 h at 37°C in the dark. Colorimetric detection of SEAP activity was performed by measuring the optical density at 630 nm using a model 550 reader (Bio-Rad, Veenendaal, The Netherlands).

#### DC propagation

Peripheral blood mononuclear cells (PBMC) were isolated from buffy coats (New York Blood Center) by Ficoll density gradient centrifugation. Monocytes were isolated from PBMC by positive magnetic cell selection with CD14 microbeads (Miltenyi Biotech, Auburn, CA, USA) according to the manufacturer's recommendations. The sorted monocytes were > 98% pure with contaminating T-cell populations representing < 1% of the cells. Monocytes were subsequently resuspended at  $1 \times 10^6$  cells/ml in RPMI 1640 (Cellgro, Manassas, VA, USA) containing 5% human AB serum (Sigma-Aldrich, St. Louis, MO, USA), 100 U/ml penicillin and 100 µg/ml Streptomycin (Hyclone), 2 mM L-glutamine, 1 mM sodium pyruvate, 0.1 mM non-essential amino acids, 25 mM HEPES (Gibco/Invitrogen), plus 1,000 U/ml GM-CSF (Leukine, Sargramostim) and 1,000 U/ml of recombinant human IL-4 (R & D Systems). The monocytes were seeded into 6-well plates ( $3 \times 10^6$  cells/well) in a final volume of 3 ml, and cultured at 37°C in an atmosphere containing 5% CO<sub>2</sub>. Immature DCs were fed every 2 days with 300 µl of fresh media containing 3,000 U of both GM-CSF and IL-4 to maintain the concentration of cytokines at 1,000 U/ml. The phenotype of the immature DC (iDC) was evaluated on day 5 or 6, when > 90% of cells were CD11c<sup>+</sup> HLA-DR<sup>+</sup> CD206<sup>++</sup> CD209<sup>++</sup> and CD14<sup>-</sup> CD80<sup>-</sup> CD83<sup>-</sup>.

#### Dendritic cell stimulation

The iDCs were gently removed from the 6-well plates, centrifuged at 300 g for 5 min at room temperature and resuspended at  $1 \times 10^6$  cells/ml in residual tissue culture supernatant. A total of  $5 \times 10^5$  iDC were seeded into 48-well plates in a final volume of 1 ml, and then exposed to the following stimuli for 48 h: 300 µl of 25-fold concentrated supernatants from transfected 293T cells containing approximately 3 µg/ml of SOSIP.R6-IZ or SOSIP.R6-IZ-CD40L protein (mock transfected supernatants were included in all experiments); 3 µg/ml of purified

recombinant JR-FL gp120; 10 ng/ml TNF- $\alpha$  and 10 ng/ml IL-1 $\beta$  (R & D Systems); 100 ng/ml LPS derived from *Salmonella typhimurium* (Sigma-Aldrich); or combinations thereof. An aliquot ( $10^5$ ) of the cells was left unstimulated in every experiment, to ascertain the baseline levels of phenotypic markers and cytokine production.

#### Immunophenotypic analysis of DC

Before and after *in vitro* stimulation, the DCs were immunophenotyped using fluorochrome-labeled MAbs to CD11c (clone B-ly6), CD14 (clone m $\phi$ p9), CD40 (clone 5C3), CD80 (clone L307.4), CD83 (clone HB15e), CD86 (clone IT2.2), CD206 (clone 19.2), CD209 (clone DCN46) and HLA-DR (clone L243) (BD Biosciences, San Jose, CA, USA). The iDC were transferred into 96-well U-bottomed plates prior to staining, and washed in ice-cold FACS buffer (PBS containing 5% human AB serum), with centrifugation at 300 g and 4°C.  $10^5$  DCs were stained for each MAb combination. Non-specific binding of MAbs to cell surface FcRs was prevented by blocking these receptors with 10% human AB serum for 30 min on ice. MAb cocktails (50  $\mu$ l) containing pre-titrated antibodies were added to DCs for an additional 30 min on ice. Isotype-matched control MAbs were included in every assay. After staining, the DCs were washed twice and fixed in 1% paraformaldehyde. Four-color analysis was performed using an LSR II flow cytometer and the data were analyzed with FlowJo software (Version 7.2, TreeStar Inc. Ashland, OR). DCs were identified by high forward scatter and side scatter and by their uniform expression of CD11c. Signals from at least 50,000 DC were acquired from each sample.

Cell-free supernatants from DC cultures were collected post-stimulation and immediately frozen at -80°C until analysis. Their contents of IL-6, IL-10, IL-12p70 and TNF- $\alpha$  were determined using commercially available ELISA kits (BD Pharmingen, San Jose, CA, USA) according to the manufacturer's instructions. Absorbance was measured using an Emax precision microplate reader (Molecular Devices, Sunnyvale, CA, USA). The assay detection sensitivity was 2 pg/ml for IL-6 and 4 pg/ml for IL-10, IL-12p70 and TNF- $\alpha$ .

#### Activation of naïve CD4<sup>+</sup> T-cells

Allogeneic naïve CD4<sup>+</sup> T-cells were isolated from frozen PBMC derived from a healthy donor (New York Blood Center) by negative selection using the naïve CD4<sup>+</sup> T cell isolation kit II (Miltenyi Biotech). The purity of isolated naïve CD4<sup>+</sup> T-cells was assessed following surface staining with the following MAbs (BD Pharmingen): CD3-APC (clone HIT3a), CD4-PERCP (clone SK3), CD45RO-PE (UCHL1) and CD27-FITC (M-T271). Naïve CD4<sup>+</sup> T-cells were defined as CD3<sup>+</sup> CD4<sup>+</sup> CD45RO<sup>-</sup> CD27<sup>+</sup> and purities exceeded 98%. Naïve CD4<sup>+</sup> T-cells were co-

cultured at a ratio of 1 DC: 10 CD4<sup>+</sup> T-cells ( $10^5$  DC +  $10^6$  T-cells) in 1 ml final volume in a 48 well plate in the absence or presence of differentially stimulated DC. On day 5, CD4<sup>+</sup> T-cells were stained with anti-CD3-APC/CD4-PERCP (as above) and HLA-DR-FITC (clone L243). For assessment of intracellular cytokine expression, CD4 + T-cells were re-stimulated with PMA (100 ng/ml) and ionomycin (1  $\mu$ g/ml) for 6 h in the presence of brefeldin A (1  $\mu$ g/ml) for the last 4 h. CD4<sup>+</sup> T-cells were stained with anti-CD3, anti-CD4 and anti-CD45RO (as above) and anti-HLA-DR-FITC (clone L243). Intracellular cytokine staining was performed after permeabilization using BD Biosciences Cytofix/Cytoperm solution according to the manufacturer's instructions, followed by incubation at room temperature with anti-IFN- $\gamma$ -PE (clone B27), anti-IL-4-PE (clone 8D4-8) or isotype matched control (murine IgG1-PE; clone X40). IL-2, IL-4 and IFN- $\gamma$  levels in the supernatant of DC-T cell co-cultures were measured using a commercially available ELISA kit (BD Pharmingen).

#### Reagents

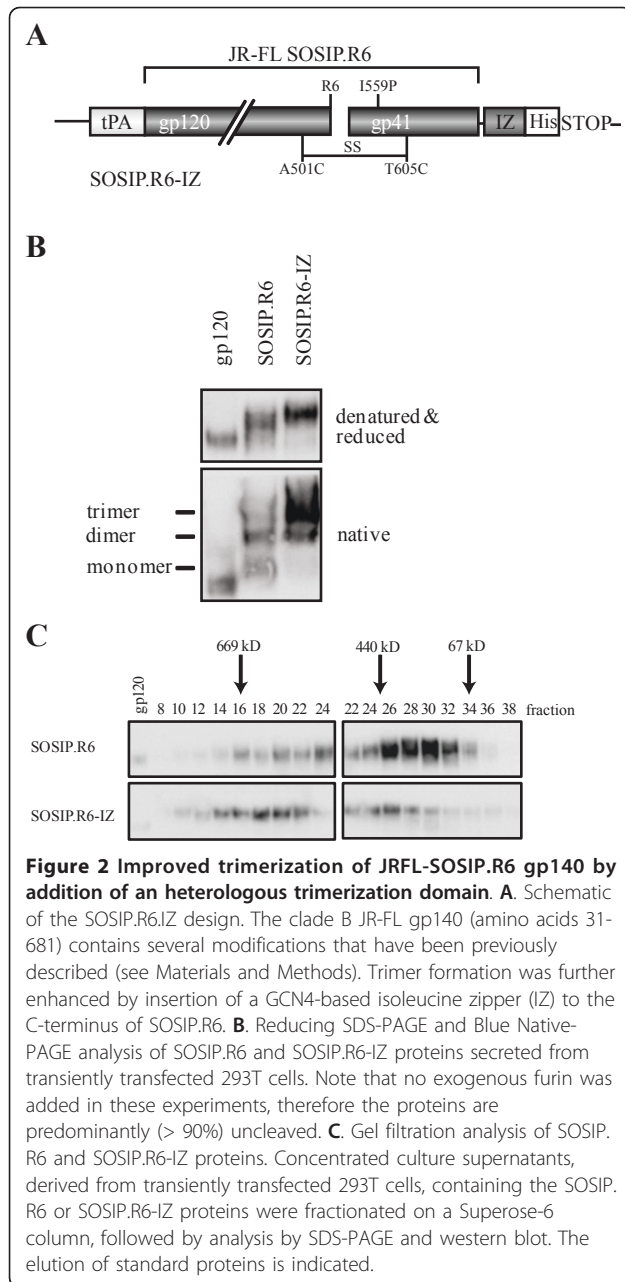
The recombinant human CD40/TNFRSF5/Fc chimera and anti-mouse CD40L monoclonal antibody (cross-reactive with human) were purchased from R&D Systems. MAb 2F5 was obtained from Hermann Katinger through the NIH AIDS Research and Reference Reagent Program (ARRRRP); HIVIg was obtained through the ARRRP from NABI and NHLBI. MAb b12 was donated by Dennis Burton (The Scripps Research Institute, La Jolla, CA, USA); CD4-IgG2, PA-1 and recombinant JR-FL gp120 (expressed in Chinese hamster ovary cells, endotoxin content < 3 EU/ml) were a gift from William Olson (Progenics Pharmaceuticals Inc., Tarrytown, NY, USA).

#### Results

##### Enhancing SOSIP.R6 gp140 trimer formation

We have previously described modifications that improve the stability of soluble, cleaved gp140 trimers, based on the R5 subtype B isolate JR-FL [11]. The amino-acid sequence of gp120 and the gp41 ectodomain was modified as follows (Figure 2A). We introduced: (i) a disulfide bond between residues 501 in gp120 and 605 in gp41 (A501C, T605C; [11]); (ii) a trimer-stabilizing substitution in gp41 (I559P; [12]); (iii) a sequence-enhanced site for furin cleavage (RRRRRR; [45]). Despite these modifications, the resulting JR-FL SOSIP.R6 gp140 protein (hereafter called SOSIP.R6) is expressed as heterogeneous oligomers, with monomers, dimers and tetramers present as well as the desired trimers (Figure 2B).

In previous studies, the addition of heterologous trimerization motifs has been shown to improve gp140 trimer formation [52]. We therefore introduced a GCN4-based



isoleucine zipper (IZ) sequence [46] at the C-terminus of SOSIP.R6 (Figure 2A). In addition, we added an octahistidine (His) motif immediately C-terminal to the IZ trimerization domain, with flexible 11 and 6 amino acid linkers placed between SOSIP.R6-IZ and IZ-His tag, respectively (Figure 2A). The optimal linker length was determined in concurrent studies (see below). The resulting SOSIP.R6-IZ and unmodified SOSIP.R6 proteins were expressed transiently in 293T cells and then analyzed by SDS-PAGE and Blue Native (BN)-PAGE. Both SOSIP.R6 proteins were efficiently expressed (Figure 2B, top panel). As expected, the unmodified SOSIP.R6 was secreted as a mixture in

which monomers, dimers and trimers were present. The proportion of trimers was markedly greater, however, for the SOSIP.R6-IZ protein (~90%), presumably because of the impact of the heterologous trimerization motif (Figure 2B, bottom panel).

We, next, studied the SOSIP.R6 and SOSIP.R6-IZ proteins using analytical size exclusion chromatography on a Superose-6 column, compared to standard proteins of defined molecular weight (Figure 2C). Analysis of the eluted Env-protein components by SDS-PAGE and Western blotting confirmed that multiple oligomeric gp140 forms were present [12]. We previously reported that SOSIP.R6 gp140 monomers, dimers and trimers were eluted from a Superdex-200 size exclusion column at positions corresponding to apparent molecular weights of 240, 410 and 520 kDa, respectively. Here, using Superose-6 columns that allow greater resolution at the higher end of the molecular weight range of interest, we observed that most of the SOSIP.R6 protein forms were eluted in volumes corresponding to apparent molecular weights in the range 150-550 kDa, which is consistent with the presence of monomers, dimers and trimers. In contrast, the SOSIP.R6-IZ protein forms were more homogeneous, with a predominant elution peak of ~600 kDa that is consistent with the enrichment of trimers. Hence, the gel filtration analysis confirms the SDS-PAGE and BN-PAGE studies and shows that the addition of the IZ motif enhances SOSIP.R6 trimer formation and/or stability.

When SOSIP.R6 proteins are expressed in 293T cells they are incompletely cleaved at the juncture between gp120 and the gp41 ectodomain, but the efficiency of cleavage is increased to ~95% by the co-transfection of a plasmid expressing furin [11,45]. In contrast, even in the presence of exogenous furin, the SOSIP.R6-IZ proteins were only partially cleaved (< 50% processing; data not shown), and processing was minimal (< 10%) when furin was not co-transfected (Figure 2B). The addition of sequence motifs to the C-terminus of the gp41 ectodomain appears to interfere with cleavage at a site several hundred residues upstream. We are now studying the underlying reasons to try to find a solution to this problem because uncleaved Env is antigenically different from cleaved Env [11,15,53,54]. In the absence of a solution to the cleavage problem, we elected to not co-transfect furin when expressing the various Env proteins outlined below, which are therefore all predominantly uncleaved.

#### Construction of a trimeric SOSIP.R6-IZ-CD40L fusion protein

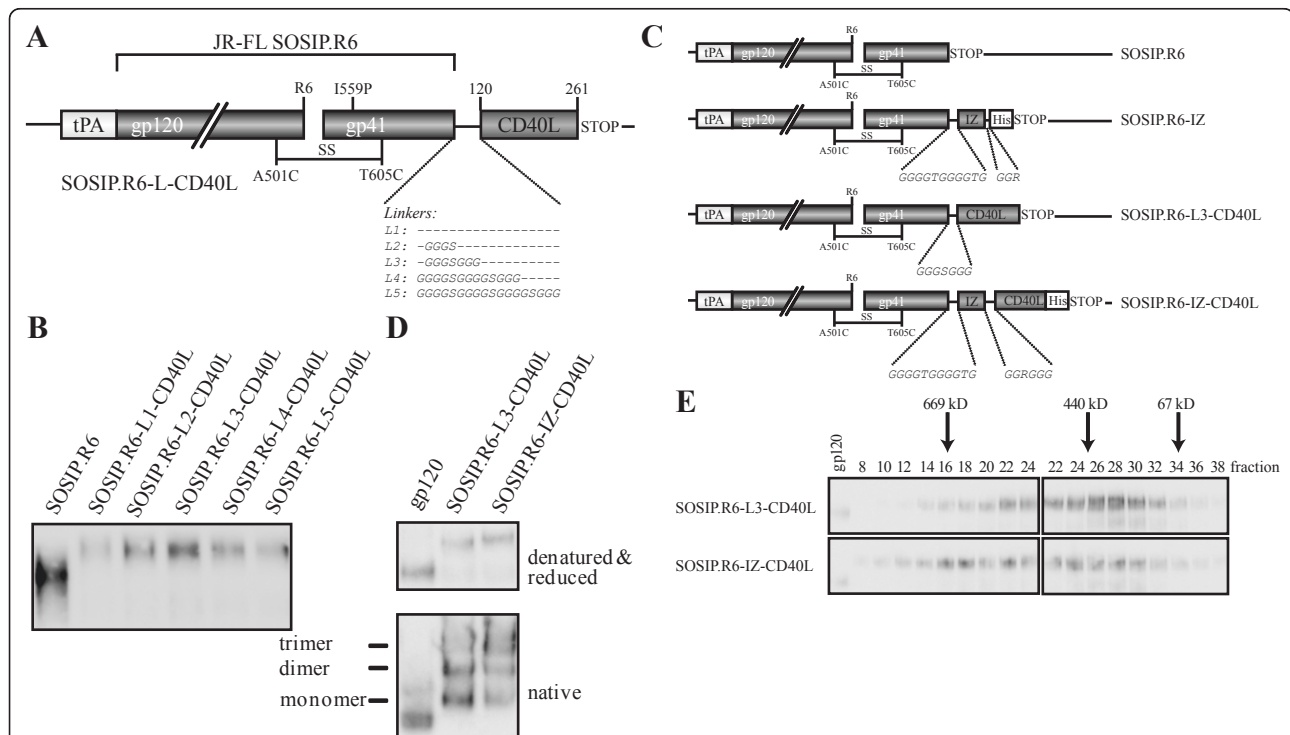
We hypothesized that we could increase the immunogenicity of Env trimers by targeting the protein to DC and at the same time providing a strong activation signal to these DCs. We, therefore, fused the extracellular

domain of human codon-optimized CD40L, consisting of amino acids 120 to 261 and including the CD40 binding site, to the C-terminus of SOSIP.R6 (Figure 3A). To allow the SOSIP.R6 and the CD40L components to fold independently and the fusion protein to be secreted efficiently, we added flexible glycine-rich linkers between the two elements. Since the optimal linker length could only be established empirically, we compared linkers of 0, 4, 7, 13 and 18 residues (constructs L1-L5; Figure 3A). The different SOSIP.R6-L-CD40L fusion proteins were expressed transiently in 293T cells and the supernatants analyzed by SDS-PAGE and western blotting (Figure 3B). Linkers L2-L4 (4-13 residues) allowed the most efficient secretion of SOSIP.R6-CD40L; having no linker or a longer linker resulted in lower expression levels (Figure 3B). Based on these results, and also cloning considerations, subsequent constructs contained an 11-residue linker between the gp140 and C-terminal components.

CD40L needs to be trimeric to be active. When soluble CD40L is expressed, it is however mostly in the monomeric and therefore inactive state [55-57]. Since the IZ trimerization domain enhanced the trimerization

of SOSIP.R6 gp140, an IZ motif was inserted between SOSIP.R6 and CD40L (Figure 3C). SDS-PAGE and BN-PAGE analyses showed that SOSIP.R6-IZ-CD40L was secreted efficiently from transiently transfected 293T cells and predominantly in the trimeric form (Figure 3D).

Analytical size exclusion chromatography confirmed these promising results (Figure 3E). The SOSIP.R6-L3-CD40L protein was eluted in volumes corresponding to molecular weights between 150 and 550 kDa, which is consistent with it being mostly monomers, dimers and trimers. The elution profile was similar to that of unmodified SOSIP.R6 (Figure 2C), but with a small shift to higher sizes caused by the presence of the CD40L moiety. The peak elution volume of the chimeric SOSIP.R6-IZ-CD40L protein was consistent with it being a trimer of ~600 kDa (Figure 3E), confirming that the IZ motif enhanced trimerization. Compared to what was expected from the BN-PAGE analysis, a significant proportion of the proteins eluted from the gel filtration column were monomers and dimers, possibly because some trimers dissociate during elution from the columns.



**Figure 3 JRFL-SOSIP.R6-IZ-CD40L design and construction.** **A.** Schematic of the SOSIP.R6.L-CD40L design and its various linkers. **B.** Optimization of the linker between SOSIP.R6 and CD40L using reducing SDS-PAGE analysis of transiently expressed SOSIP.R6-L-CD40L with the different linkers. **C.** Schematic of the constructs mainly used in this study. **D.** Reducing SDS-PAGE and Blue Native-PAGE analysis of SOSIP.R6-L3-CD40L and SOSIP.R6-IZ-CD40L proteins secreted from transiently transfected 293T cells. **E.** Gel filtration analysis of SOSIP.R6-L3-CD40L and SOSIP.R6-IZ-CD40LHis proteins. Concentrated culture supernatants, derived from transiently transfected 293T cells, containing the SOSIP.R6-L3-CD40L or SOSIP.R6-IZ-CD40LHis proteins were fractionated on a Superose-6 column, followed by analysis by SDS-PAGE and western blot. The elution of standard proteins is indicated.



Similar to the parental SOSIP.R6-IZ construct, the SOSIP.R6-IZ-CD40L fusion construct was not cleaved at the gp120-gp41 junction, which may affect its antigenic structure and perhaps its ability to induce NABs. However, since our immediate goal was to investigate co-stimulation by the CD40L component, we continued to use the uncleaved fusion construct.

#### SOSIP.R6-IZ-CD40L binds to CD4, CD40 and neutralizing antibodies

To investigate whether the SOSIP.R6 and CD40L components of the chimeric construct were properly folded and functional, we measured the binding to specific ligands. The SOSIP.R6-IZ-CD40L protein was immunoprecipitated efficiently from concentrated supernatant by pooled Ig from HIV-infected individuals (HIVIg) and by NABs against several gp120 or gp41 epitopes, specifically b12 to the CD4 binding site, 17b to a CD4-induced epitope and 2F5 to the MPER region (Figure 4 and data not shown). Furthermore, the fusion protein bound to the viral receptors CD4 (Figure 4) and DC-SIGN (data not shown). We next performed immunoprecipitations with a neutralizing antibody to CD40L and a CD40-Fc construct (Figure 4). The antibody recognized the CD40L domain of the fusion protein, which was also able to interact with CD40. Thus, the chimeric SOSIP.R6-IZ-CD40L molecule is capable of interacting with relevant receptors and NABs.

#### SOSIP.R6-IZ-CD40L activates NF- $\kappa$ B through CD40

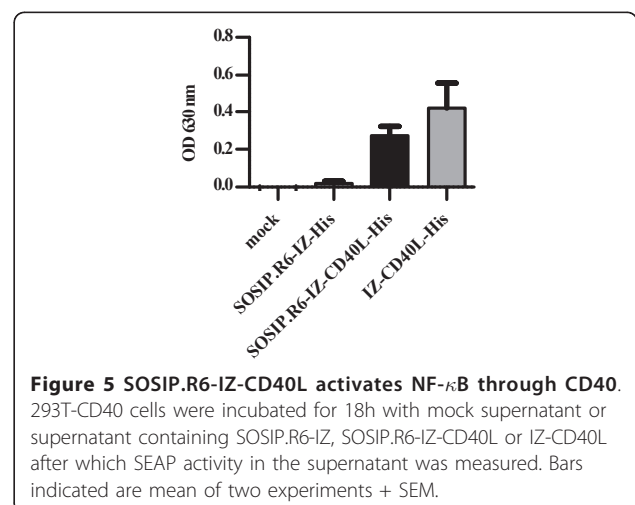
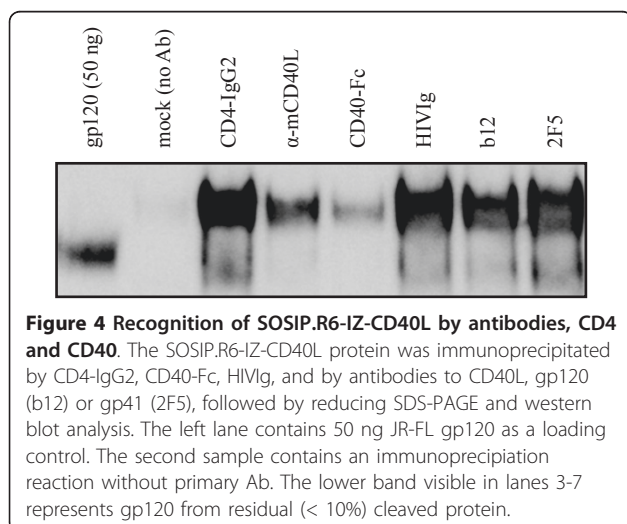
To determine whether SOSIP.R6-IZ-CD40L was biologically active, we used a HEK 293-derived CD40 reporter cell line that overexpresses CD40 and produces secreted embryonic alkaline phosphatase (SEAP) when CD40 ligation activates NF- $\kappa$ B [58]. We therefore transiently expressed SOSIP.R6-IZ, trimeric CD40L without SOSIP.

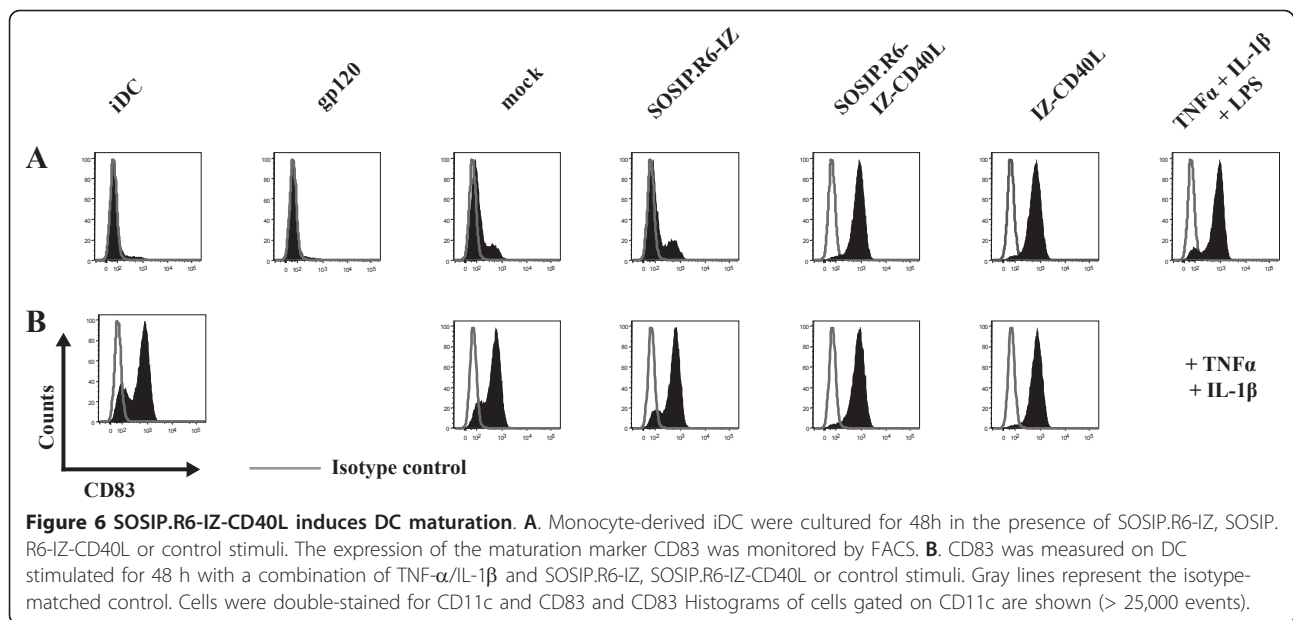
R6 (IZ-CD40L) and SOSIP.R6-IZ-CD40L in 293T cells with mock transfected supernatant serving as a negative control. The positive control, concentrated supernatant containing IZ-CD40L proteins, activated NF- $\kappa$ B, as measured by SEAP release (Figure 5A). The concentrated supernatant containing SOSIP.R6-IZ-CD40L fusion protein, but not SOSIP.R6-IZ and mock supernatant, also induced SEAP activity, indicating that the CD40L component was capable of CD40 ligation and signaling through CD40L consistent with the protein being trimeric (Figure 5A).

#### SOSIP.R6-IZ-CD40L induces DC maturation

CD40L is an important co-stimulatory molecule for DC during DC-T cell interactions. We therefore investigated whether SOSIP.R6-IZ-CD40L was able to activate DC, using expression of CD83, a well-characterized DC maturation marker, as an endpoint. iDC were treated for 48 h with concentrated 293T supernatant containing SOSIP.R6-IZ-CD40L and, for comparison, with a standard maturation cocktail (TNF- $\alpha$ /IL-1 $\beta$ /LPS, positive control) or concentrated supernatant containing IZ-CD40L, SOSIP.R6-IZ or monomeric gp120. CD83 expression on unstimulated iDC served as a baseline (Figure 6A). An additional DC culture was exposed to supernatants from mock-transfected 293T cells to control for the presence of factors released from these cells (Figure 6A).

Purified, monomeric gp120 did not induce DC maturation (4.9% CD83<sup>+</sup> cells, compared to 7.0% on untreated iDC), as reported previously (Figure 6A) [59]. A low level of CD83 up-regulation (19.8% CD83<sup>+</sup>) occurred when DC were treated with supernatant from mock-transfected 293T cells, which is probably attributable to contaminant cytokines or other immunomodulatory proteins. CD83 expression was similar (24.9%





CD83<sup>+</sup>) on cells treated with the SOSIP.R6-IZ negative control protein. In contrast, exposure of DC to IZ-CD40L or SOSIP.R6-IZ-CD40L caused almost all the cells to upregulate CD83 (94.8% and 95.5% CD83<sup>+</sup> respectively), an outcome comparable to treatment with the TNF- $\alpha$ /IL-1 $\beta$ /LPS maturation cocktail (89.5% CD83<sup>+</sup>). Similar results were obtained using CD80 expression as an alternative marker for DC maturation, while a converse trend was apparent for expression of DC-SIGN (CD209) and the mannose receptor (CD206), two cell surface proteins that are down-regulated when DC mature (data not shown).

We also assessed whether SOSIP.R6-IZ-CD40L and the various control proteins could augment DC maturation induced by TNF- $\alpha$ /IL-1 $\beta$  (Figure 6B). Stimulation by TNF- $\alpha$ /IL-1 $\beta$  induced CD83 expression on 75.6% of the DC (Figure 6B). Adding the mock or SOSIP.R6-IZ supernatants to the TNF- $\alpha$ /IL-1 $\beta$  cocktail had a marginal effect (80.0% and 84.8% CD83<sup>+</sup>, respectively). However, combining SOSIP.R6-IZ-CD40L or IZ-CD40L with TNF- $\alpha$ /IL-1 $\beta$  increased the number of CD83<sup>+</sup> cells to 94.8% and 93.6%, respectively. Thus, SOSIP.R6-IZ-CD40L is able to activate DC to at least the same extent as a trimeric CD40L protein.

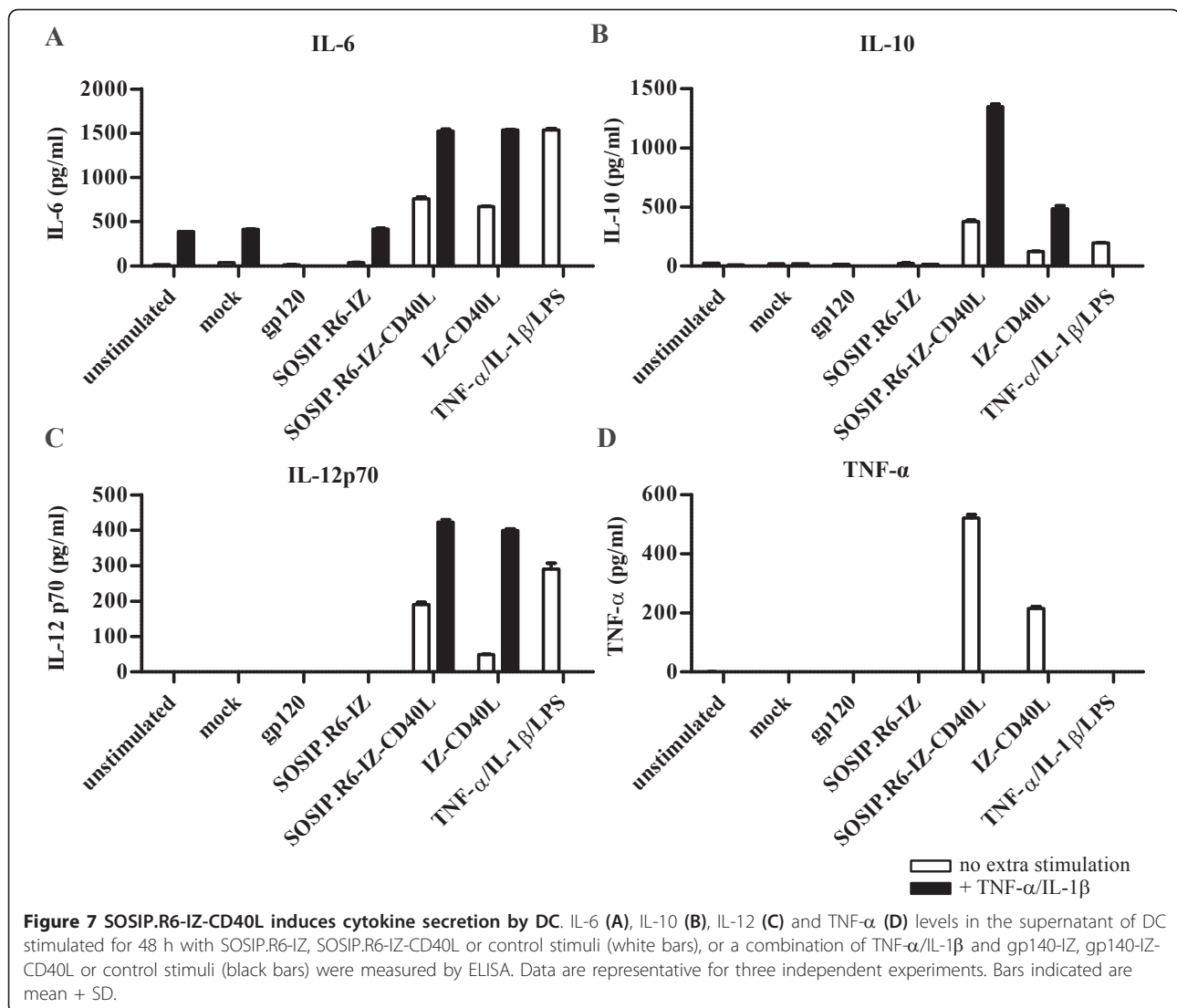
#### SOSIP.R6-IZ-CD40L induces secretion of IL-6, IL-10, IL-12 and TNF- $\alpha$

Since the particular combination of cytokines secreted by activated DC is central in defining the subsequent immune responses, we wished to identify whether SOSIP.R6-IZ-CD40L-treated cells released IL-6, IL-10, IL-12 and TNF- $\alpha$ . Exposure of DC to gp120, mock supernatant or SOSIP.R6-IZ did not trigger the secretion of meaningful amounts

of any of these cytokines (Figure 7A-D, white bars). In contrast, all these cytokines were produced abundantly by DC treated with SOSIP.R6-IZ-CD40L (763, 375, 191 and 523 pg/ml, respectively) or IZ-CD40L (675, 123, 50 and 215 pg/ml, respectively). As expected, the TNF- $\alpha$ /IL-1 $\beta$ /LPS maturation cocktail also induced IL-6, IL-10 and IL-12 secretion, albeit with some qualitative differences compared to SOSIP.R6-IZ-CD40L. TNF- $\alpha$  induction could not be analyzed because it was already present in the maturation cocktail. DC stimulated with TNF- $\alpha$ /IL-1 $\beta$  secreted moderate amounts of IL-6 and low levels of IL-10 and IL-12, and the addition of mock or SOSIP.R6-IZ supernatant had no further effect (Figure 7A-D, black bars). However, the addition of SOSIP.R6-IZ-CD40L or IZ-CD40L to the TNF- $\alpha$ /IL-1 $\beta$  cocktail substantially increased the secretion of all three cytokines.

#### SOSIP.R6-IZ-CD40L-exposed DC prime naïve CD4<sup>+</sup> T-cells

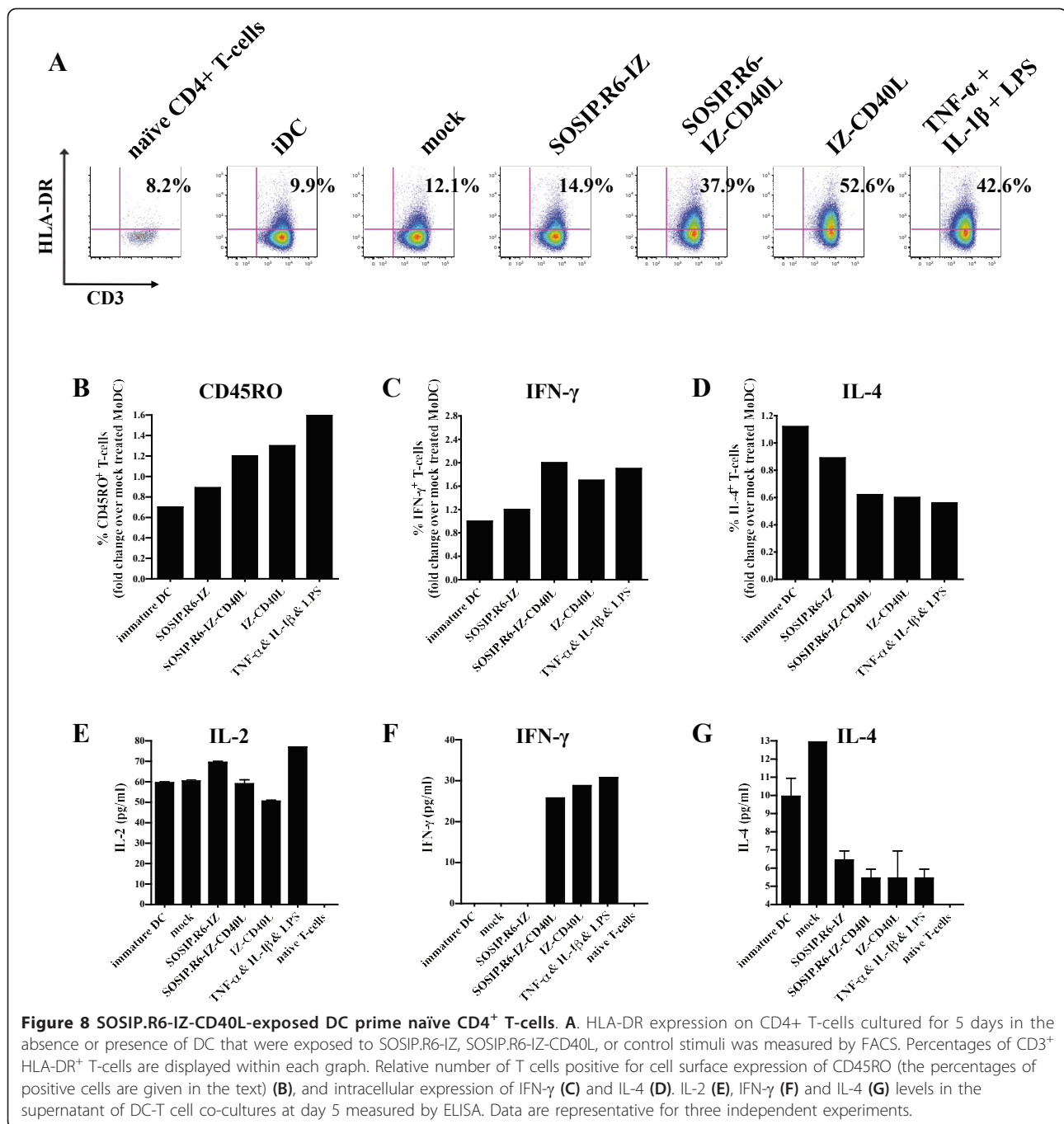
After stimulation with the various stimuli outlined above, DC were co-cultured for 5 days with allogeneic naïve CD4<sup>+</sup> T cells in a mixed lymphocyte reaction to investigate their T<sub>H</sub>-priming capacity. Expression of the late activation marker HLA-DR (MHC class II) on the CD4<sup>+</sup> T cells was then analyzed (Figure 8A). DCs exposed to the mock supernatant or SOSIP.R6-IZ stimulated CD4<sup>+</sup> T-cells only poorly (8.6% and 11.4% HLA-DR<sup>+</sup> T cells, respectively, compared to 2.6% for unstimulated T cells and 4.5% for T cells co-cultured with iDC). In contrast, DC that had been matured with SOSIP.R6-IZ-CD40L or IZ-CD40L induced HLA-DR upregulation on 31.6% and 46.7% of the CD4<sup>+</sup> T cells, respectively. This degree of HLA-DR up-regulation was higher than on T cells co-cultured with TNF- $\alpha$ /IL-1 $\beta$ /LPS-matured DC (24.4%



HLA-DR<sup>+</sup>). We, next, investigated whether the T cells expressed the memory T cell marker CD45RO (Figure 8B). 11% of the CD4<sup>+</sup> T cells that were co-cultured with SOSIP.R6-IZ-treated DC expressed CD45RO, while 19% CD4<sup>+</sup> T cells that were co-cultured with TNF-α/IL-1β/LPS-matured DC stained positive for CD45RO and 9% of the CD4<sup>+</sup> T cells incubated with iDC. The SOSIP.R6-IZ-CD40L-exposed DC induced a subtly enhanced expression of CD45RO (14% positive CD4<sup>+</sup> T cells), similar to IZ-CD40L-exposed DC (16%). Thus, compared to SOSIP.R6-IZ-treated DC, SOSIP.R6-IZ-CD40L-exposed DC induced enhanced numbers of CD4<sup>+</sup> T cells positive for the activation marker HLA-DR and the memory marker CD45RO.

To assess the CD4<sup>+</sup> T cell polarization, we stained the CD4<sup>+</sup> T cells for intracellular IFN-γ and IL-4 (Figure 8C, D). We noted that SOSIP.R6-IZ-CD40L-exposed DC induced twice the number IFN-γ expressing CD4<sup>+</sup> T cells

compared to SOSIP.R6-IZ- or mock-treated DC, similar to the numbers induced by TNF-α/IL-1β/LPS- and IZ-CD40L-matured DC (Figure 8C). The enhanced expression of IFN-γ was mirrored by a decreased expression of IL-4 (Figure 8D). The intracellular staining data were corroborated by ELISA experiments. Unstimulated CD4<sup>+</sup> T cells or cells co-cultured with iDC, mock-treated DC or SOSIP.R6-IZ-treated DC did not secrete detectable levels of IFN-γ (Figure 8F). However, DC exposed to SOSIP.R6-IZ-CD40L or IZ-CD40L induced the release of significant amounts of IFN-γ from CD4<sup>+</sup> T-cells (26 and 29 pg/ml, respectively), as did TNF-α/IL-1β/LPS-matured DC (31 pg/ml). Consistent with the intracellular staining data, the increase in IFN-γ was associated with a decrease in IL-4 secretion (Figure 8G). We also measured IL-2 secretion in DC-T cell co-cultures and found that SOSIP.R6-IZ-CD40L-treated DC behaved no differently from cells exposed to SOSIP.R6-IZ (Figure 8E). In summary, DC



exposed to SOSIP.R6-IZ-CD40L can prime naïve CD4<sup>+</sup> T-cells in vitro and induce them to secrete IFN- $\gamma$ .

## Discussion

To counter the poor immunogenicity of HIV-1 Env proteins, we fused stabilized SOSIP.R6 trimers directly to a costimulatory molecule, CD40L, the latter acting as a 'cis-adjuvant' to activate DC. We show here that the chimeric SOSIP.R6-IZ-CD40L molecule is folded correctly, can engage CD40 and signal through CD40 to activate

human DC. In turn, SOSIP.R6-IZ-CD40L-exposed DC are able to activate CD4<sup>+</sup> T-cells, and induce a pool of memory T cells. These data suggest that SOSIP.R6-IZ-CD40L may induce enhanced immune responses including memory responses and warrant the *in vivo* testing of this construct.

We intend to use SOSIP.R6-IZ-CD40L trimers for subsequent immunogenicity studies. The *cis*-adjuvant strategy described here differs from approaches using lectin receptors to target DC and enhance antigen



presentation [24-27]. First, CD40L not only targets the antigen to DC, but also activates these cells. Second, CD40L also activates cell types other than DC, notably B cells. The covalent linkage of an adjuvant and antigen has been shown to be a more effective way to enhance antigen-specific immune responses than a simple mixture of adjuvant and antigen. For example, immunization with HIV Gag, chemically linked to a TLR7/8 agonist, induced substantially better humoral and cellular responses than Gag that was merely mixed with the same adjuvant [19]. As another example, a GFP-CD40L fusion protein was superior to GFP or CD40L alone and the GFP + CD40L mixture for inducing GFP-specific antibody responses in mice [60]. Similarly, CD40L fusion enhanced the immunogenicity of a self (tumor) antigen in mice, bovine herpesvirus-1 glycoprotein D in cattle, and duck hepatitis B virus core antigen in ducks [61-64]. The likely explanation for the benefit incurred by covalently linking antigen to the adjuvant is that the very cells encountering the antigen are simultaneously activated by the adjuvant.

Incorporation of CD40L in canarypox vectors, expressing HIV antigens, has also been shown to benefit immune responses [43]. Furthermore, recent studies have shown that CD40L can be effectively incorporated into HIV virus-like particles (VLPs) [41,42]. Such VLPs were shown to stimulate DC and were able to induce improved humoral and cellular responses in mice compared to VLPs that did not contain CD40L.

One concern with using host molecules to enhance vaccine immunogenicity is the potential induction of auto-antibodies. When CD40L was tested in a phase I trial to treat cancer patients, no major side effects were observed [44]. We also note that the amounts of protein required for vaccination are at least 2 orders of magnitude lower than those required in a therapeutic setting, which should reduce the chances of inducing auto-antibodies. 3 injections of 20-150 µg of a typical protein vaccine confer protection against infection. In phase III trials using gp120, an unusual amount and number of doses was given (7 injections of 600 µg gp120), but this is still considerably lower than the amounts used as therapeutics. In the above mentioned clinical trial using CD40L, patients received 50-150 µg of CD40L per kg bodyweight per day. Nevertheless, when evaluating the CD40L fusion construct in preclinical *in vivo* studies and potential clinical trials, the induction of antibodies against CD40L should be closely monitored.

A good humoral response to an antigen should involve antibodies of high titer, affinity and avidity, and should have a long half-life with the creation of B cell memory (and preferably also T cell memory). These various outcomes may be facilitated by the use of CD40L and/or other *cis*-adjuvants. Stimulation of the immune

system by adjuvants or '*cis*-adjuvants' increases the overall level of antibodies to the administered antigen, but only a subset of these antibodies is neutralizing. This can be beneficial, by analogy to the aphorism that 'a rising tide lifts all boats'. However, providing additional stimulatory signals to B cells may also improve the quality of the antibodies that are elicited, perhaps because B cell stimulation helps the affinity maturation process [18]. Thus, a recent study on RSV demonstrates that B cell stimulation through TLRs improves both the affinity and neutralizing potency of anti-RSV antibodies [18].

## Conclusion

In conclusion, we have characterized a trimeric gp140-CD40L fusion protein that is able to activate human DC whereas unconjugated gp140 is not able to do so. Overall, the use of '*cis*-adjuvants' may have wider applicability in subunit vaccine development. The wealth of natural candidate molecules and the increasing understanding of their roles in immunology provide an opportunity for customized immunogen design in which the antigen is coupled to a molecule to enhance a specific and desired type of response.

## Acknowledgements

We are grateful to Richard Kornbluth, William Olson, Dennis Burton and James Robinson for reagents, and PJ Klasse for helpful discussions. This research was supported in part by grants #2005021 (to BB) and #2008013 (to RWS) from the AIDS fund (Amsterdam). RWS is a recipient of Veni and Vidi fellowships from the Netherlands Organization for Scientific Research (NWO), and a Mathilde Krim research fellowship from the American Foundation for AIDS Research (amfAR).

## Author details

<sup>1</sup>Laboratory of Experimental Virology, Department of Medical Microbiology Center for Infection and Immunity Amsterdam (CINIMA), Netherlands.

<sup>2</sup>Department of Microbiology and Immunology, Weill Medical College of Cornell University, New York, USA.

## Authors' contributions

Author contributions are as follows. MM contributed to study design and performed experiments. KM, RDV, DE, TVM, IB, CVDS, KD performed experiments. BB, JPM and RWS conceived and designed the study. MM, BB, JPM and RWS wrote the manuscript. All authors read and approved the final manuscript.

## Competing interests

The authors declare that they have no competing interests.

Received: 12 November 2010 Accepted: 20 June 2011

Published: 20 June 2011

## References

1. Reynolds MR, Weiler AM, Weisgrau KL, Piaskowski SM, Furlott JR, Weinfurter JT, Kaizu M, Soma T, Leon EJ, MacNair C, Leaman DP, Zwick MB, Gostick E, Musani SK, Price DA, Friedrich TC, Rakasz EG, Wilson NA, McDermott AB, Boyle R, Allison DB, Burton DR, Koff WC, Watkins DI: **Macaques vaccinated with live-attenuated SIV control replication of heterologous virus.** *J Exp Med* 2008, **205**:2537-2550.
2. Liu J, O'Brien KL, Lynch DM, Simmons NL, La PA, Riggs AM, Abbink P, Coffey RT, Grandpre LE, Seaman MS, Landucci G, Forthal DN, Montefiori DC, Carville A, Mansfield KG, Havenga MJ, Pau MG, Goudsmit J, Barouch DH:

- Immune control of an SIV challenge by a T-cell-based vaccine in rhesus monkeys. *Nature* 2009, **457**:87-91.
3. Shattock RJ, Haynes BF, Pulendran B, Flores J, Esparza J: **Improving defenses at the portal of HIV entry: mucosal and innate immunity.** *PLoS Med* 2008, **5**:e81.
  4. Flynn NM, Forthal DN, Harro CD, Judson FN, Mayer KH, Para MF: **Placebo-controlled phase 3 trial of a recombinant glycoprotein 120 vaccine to prevent HIV-1 infection.** *J Infect Dis* 2005, **191**:654-665.
  5. Pitisuttithum P, Gilbert P, Gurwith M, Heyward W, Martin M, van GF, Hu D, Tappero JW, Choopanya K: **Randomized, double-blind, placebo-controlled efficacy trial of a bivalent recombinant glycoprotein 120 HIV-1 vaccine among injection drug users in Bangkok, Thailand.** *J Infect Dis* 2006, **194**:1661-1671.
  6. Burton DR, Desrosiers RC, Doms RW, Koff WC, Kwong PD, Moore JP, Nabel GJ, Sodroski J, Wilson IA, Wyatt RT: **HIV vaccine design and the neutralizing antibody problem.** *Nat Immunol* 2004, **5**:233-236.
  7. Eggink D, Melchers M, Sanders RW: **Antibodies to HIV-1: aiming at the right target.** *Trends Microbiol* 2007, **15**:291-294.
  8. Kwong PD, Wilson IA: **HIV-1 and influenza antibodies: seeing antigens in new ways.** *Nat Immunol* 2009, **10**:573-578.
  9. Parren PW, Burton DR, Sattentau QJ: **HIV-1 antibody-debris or virion?** *Nat Med* 1997, **3**:366-367.
  10. Walker LM, Burton DR: **Rational antibody-based HIV-1 vaccine design: current approaches and future directions.** *Curr Opin Immunol* 2010, **22**(3):358-66, Epub 2010 Mar 17.
  11. Binley JM, Sanders RW, Clas B, Schuelke N, Master A, Guo Y, Kajumo F, Anselma DJ, Maddon PJ, Olson WC, Moore JP: **A recombinant HIV-1 envelope glycoprotein complex stabilized by an intermolecular disulfide bond between the gp120 and gp41 subunits is an antigenic mimic of the trimeric virion-associated structure.** *J Virol* 2000, **74**:627-643.
  12. Sanders RW, Vesanan M, Schuelke N, Master A, Schiffner L, Kalyanaraman R, Paluch M, Berkhout B, Maddon PJ, Olson WC, Lu M, Moore JP: **Stabilization of the soluble, cleaved, trimeric form of the envelope glycoprotein complex of human immunodeficiency virus type 1.** *J Virol* 2002, **76**:8875-8889.
  13. Yang X, Wyatt R, Sodroski J: **Improved elicitation of neutralizing antibodies against primary human immunodeficiency viruses by soluble stabilized envelope glycoprotein trimers.** *J Virol* 2001, **75**:1165-1171.
  14. Srivastava IK, Stamatatos L, Kan E, Vajdy M, Lian Y, Hilt S, Martin L, Vita C, Zhu P, Roux KH, Vojtech L, C Montefiori D, Donnelly J, Ulmer JB, Barnett SW: **Purification, characterization, and immunogenicity of a soluble trimeric envelope protein containing a partial deletion of the V2 loop derived from SF162, an R5-tropic human immunodeficiency virus type 1 isolate.** *J Virol* 2003, **77**:11244-11259.
  15. Beddows S, Franti M, Dey AK, Kirschner M, Iyer SP, Fisch DC, Ketas T, Yuste E, Desrosiers RC, Klasse PJ, Maddon PJ, Olson WC, Moore JP: **A comparative immunogenicity study in rabbits of disulfide-stabilized, proteolytically cleaved, soluble trimeric human immunodeficiency virus type 1 gp140, trimeric cleavage-defective gp140 and monomeric gp120.** *J Virol* 2007, **360**:329-340.
  16. Gilbert PB, Peterson ML, Follmann D, Hudgens MG, Francis DP, Gurwith M, Heyward WL, Jobes DV, Popovic V, Self SG, Sinangil F, Burke D, Berman PW: **Correlation between immunologic responses to a recombinant glycoprotein 120 vaccine and incidence of HIV-1 infection in a phase 3 HIV-1 preventive vaccine trial.** *J Infect Dis* 2005, **191**:666-677.
  17. Bonsignori M, Moody MA, Parks RJ, Holl TM, Kelson G, Hicks CB, Vandergrift N, Tomaras GD, Haynes BF: **HIV-1 envelope induces memory B cell responses that correlate with plasma antibody levels after envelope gp120 protein vaccination or HIV-1 infection.** *J Immunol* 2009, **183**:2708-2717.
  18. Delgado MF, Coviello S, Monsalvo AC, Melendi GA, Hernandez JZ, Bataille JP, Diaz L, Trento A, Chang HY, Mitzner W, Ravetch J, Melero JA, Irusta PM, Polack FP: **Lack of antibody affinity maturation due to poor Toll-like receptor stimulation leads to enhanced respiratory syncytial virus disease.** *Nat Med* 2009, **15**:34-41.
  19. Wille-Reece U, Flynn BJ, Lore K, Koup RA, Kedl RM, Mattapallil JJ, Weiss WR, Roederer M, Seder RA: **HIV Gag protein conjugated to a Toll-like receptor 7/8 agonist improves the magnitude and quality of Th1 and CD8+ T cell responses in nonhuman primates.** *Proc Natl Acad Sci USA* 2005, **102**:15190-15194.
  20. Eckl-Dorna J, Batista FD: **BCR-mediated uptake of antigen linked to TLR9 ligand stimulates B-cell proliferation and antigen-specific plasma cell formation.** *Blood* 2009, **113**:3969-3977.
  21. Bower JF, Yang X, Sodroski J, Ross TM: **Elicitation of neutralizing antibodies with DNA vaccines expressing soluble stabilized human immunodeficiency virus type 1 envelope glycoprotein trimers conjugated to C3d.** *J Virol* 2004, **78**:4710-4719.
  22. Koch M, Frazier J, Sodroski J, Wyatt R: **Characterization of antibody responses to purified HIV-1 gp120 glycoproteins fused with the molecular adjuvant C3d.** *J Virol* 2005, **340**:277-284.
  23. McCormick AL, Thomas MS, Heath AW: **Immunization with an interferon-gamma-gp120 fusion protein induces enhanced immune responses to human immunodeficiency virus gp120.** *J Inf Dis* 2001, **184**:1423-1430.
  24. Bonifaz LC, Bonnyay DP, Charalambous A, Darguste DJ, Fujii S, Soares H, Brimnes MK, Moltedo B, Moran TM, Steinman RM: **In vivo targeting of antigens to maturing dendritic cells via the DEC-205 receptor improves T cell vaccination.** *J Exp Med* 2004, **199**:815-824.
  25. Dudziak D, Kamphorst AO, Heidkamp GF, Buchholz VR, Trumppeller C, Yamazaki S, Cheong C, Liu K, Lee HW, Park CG, Steinman RM, Nussenzweig MC: **Differential antigen processing by dendritic cell subsets in vivo.** *Science* 2007, **315**:107-111.
  26. Yang L, Yang H, Rideout K, Cho T, Joo KI, Ziegler L, Elliot A, Walls A, Yu D, Baltimore D, Wang P: **Engineered lentivector targeting of dendritic cells for in vivo immunization.** *Nat Biotechnol* 2008, **26**:326-334.
  27. Lahoud MH, Proietto AI, Ahmet F, Kitsoulis S, Eidsmo L, Wu L, Sathe P, Pietersz S, Chang HW, Walker ID, Maraskovsky E, Bralley H, Lew AM, Wright MD, Heath WR, Shortman K, Caminschi I: **The C-type lectin Clec12A present on mouse and human dendritic cells can serve as a target for antigen delivery and enhancement of antibody responses.** *J Immunol* 2009, **182**:7587-7594.
  28. Ma DY, Clark EA: **The role of CD40 and CD154/CD40L in dendritic cells.** *Semin Immunol* 2009, **21**:265-272.
  29. Caux C, Massacrier C, Vanbervliet B, Dubois B, van KC, Durand I, Banchereau J: **Activation of human dendritic cells through CD40 cross-linking.** *J Exp Med* 1994, **180**:1263-1272.
  30. S hreedhar V, Moodycliffe AM, Ullrich SE, Bucana C, Kripke ML, Flores-Romo L: **Dendritic cells require T cells for functional maturation in vivo.** *Immunity* 1999, **11**:625-636.
  31. van Kooten C, Banchereau J: **CD40-CD40 ligand.** *J Leukoc Biol* 2000, **67**:2-17.
  32. Gray D, Siepmann K, Wohlleben G: **CD40 ligation in B cell activation, isotype switching and memory development.** *Semin Immunol* 1994, **6**:303-310.
  33. Mendoza RB, Cantwell MJ, Kipps TJ: **Immunostimulatory effects of a plasmid expressing CD40 ligand (CD154) on gene immunization.** *J Immunol* 1997, **159**:5777-5781.
  34. Dullforce P, Sutton DC, Heath AW: **Enhancement of T cell-independent immune responses in vivo by CD40 antibodies.** *Nat Med* 1998, **4**:88-91.
  35. Gurunathan S, Irvine KR, Wu CY, Cohen JI, Thomas E, Prussin C, Restifo NP, Seder RA: **CD40 ligand/trimer DNA enhances both humoral and cellular immune responses and induces protective immunity to infectious and tumor challenge.** *J Immunol* 1998, **161**:4563-4571.
  36. Rolph MS, Kaufmann SH: **CD40 signaling converts a minimally immunogenic antigen into a potent vaccine against the intracellular pathogen *Listeria monocytogenes*.** *J Immunol* 2001, **166**:5115-5121.
  37. Ninomiya A, Ogasawara K, Kajino K, Takada A, Kida H: **Intranasal administration of a synthetic peptide vaccine encapsulated in liposome together with an anti-CD40 antibody induces protective immunity against influenza A virus in mice.** *Vaccine* 2002, **20**:3123-3129.
  38. Staveley-O'Carroll K, Schell TD, Jimenez M, Mylin LM, Tevethia MJ, Schoenberger SP, Tevethia SS: **In vivo ligation of CD40 enhances priming against the endogenous tumor antigen and promotes CD8+ T cell effector function in SV40 T antigen transgenic mice.** *J Immunol* 2003, **171**:697-707.
  39. Wienhold D, Armengol E, Marquardt A, Marquardt C, Voigt H, Buttner M, Saalmuller A, Pfaff E: **Immunomodulatory effect of plasmids co-expressing cytokines in classical swine fever virus subunit gp55/E2-DNA vaccination.** *Vet Res* 2005, **36**:571-587.
  40. Llopiz D, Dotor J, Zabaleta A, Lasarte JJ, Prieto J, Borrás-Cuesta F, Sarobe P: **Combined immunization with adjuvant molecules poly(I:C) and anti-**

- CD40 plus a tumor antigen has potent prophylactic and therapeutic antitumor effects. *Cancer Immunol Immunother* 2008, **57**:19-29.
41. Zhang R, Zhang S, Li M, Chen C, Yao Q: Incorporation of CD40 ligand into SHIV virus-like particles (VLP) enhances SHIV-VLP-induced dendritic cell activation and boosts immune responses against HIV. *Vaccine* 2010, **28**(31):5114-27, Epub 2010 May 14.
  42. Skountzou I, Quan FS, Gangadhara S, Ye L, Vzorov A, Selvaraj P, Jacob J, Compans RW, Kang SM: Incorporation of glycosylphosphatidylinositol-anchored granulocyte-macrophage colony-stimulating factor or CD40 ligand enhances immunogenicity of chimeric simian immunodeficiency virus-like particles. *J Virol* 2007, **81**:1083-1094.
  43. Liu J, Yu Q, Stone GW, Yue FY, Ngai N, Jones RB, Kornbluth RS, Ostrowski MA: CD40L expressed from the canarypox vector, ALVAC, can boost immunogenicity of HIV-1 canarypox vaccine in mice and enhance the in vitro expansion of viral specific CD8+ T cell memory responses from HIV-1-infected and HIV-1-uninfected individuals. *Vaccine* 2008, **26**:4062-4072.
  44. Vonderheide RH, Dutcher JP, Anderson JE, Eckhardt SG, Stephans KF, Razvilas B, Garl S, Butine MD, Perry VP, Ghalie R, Caron DA, Gribben JG: Phase I study of recombinant human CD40 ligand in cancer patients. *Journal of Clinical Oncology* 2001, **19**:3280-3287.
  45. Binley JM, Sanders RW, Master A, Cayanan CS, Wiley CL, Schiffner L, Travis B, Kuhmann S, Burton DR, Hu S-L, Olsos WC, Moore JP: Enhancing the proteolytic maturation of human immunodeficiency virus type 1 envelope glycoproteins. *J Virol* 2002, **76**:2606-2616.
  46. Harbury PB, Kim PS, Alber T: Crystal structure of an isoleucine-zipper trimer. *Nature* 1994, **371**:80-83.
  47. Eggink D, Melchers M, Wuhler M, van MT, Dey AK, Naaijken BA, David KB, Le D, Deelder AM, Kang K, Olson WC, Berkhout B, Hokke CH, Moore JP, Sanders RW: Lack of complex N-glycans on HIV-1 envelope glycoproteins preserves protein conformation and entry function. *Virology* 2010, **401**:236-247.
  48. Kirschner M, Monrose V, Paluch M, Techodamrongsin N, Rethwilm A, Moore JP: The production of cleaved, trimeric human immunodeficiency virus type 1 (HIV-1) envelope glycoprotein vaccine antigens and infectious pseudoviruses using linear polyethylenimine as a transfection reagent. *Protein Expr Purif* 2006, **48**:61-68.
  49. Trkola A, Dragic T, Arthos J, Binley JM, Olson WC, Allaway GP, Cheng-Mayer C, Robinson J, Maddon PJ, Moore JP: CD4-dependent, antibody-sensitive interactions between HIV-1 and its co-receptor CCR-5. *Nature* 1996, **384**:184-187.
  50. Schagger H, Cramer WA, von JG: Analysis of molecular masses and oligomeric states of protein complexes by blue native electrophoresis and isolation of membrane protein complexes by two-dimensional native electrophoresis. *Anal Biochem* 1994, **217**:220-230.
  51. Schagger H, von JG: Blue native electrophoresis for isolation of membrane protein complexes in enzymatically active form. *Anal Biochem* 1991, **199**:223-231.
  52. Yang X, Florin L, Farzan M, Kolchinsky P, Kwong PD, Sodroski J, Wyatt R: Modifications that stabilize human immunodeficiency virus envelope glycoprotein trimers in solution. *J Virol* 2000, **74**:4746-4754.
  53. Pancera M, Lebowitz J, Schon A, Zhu P, Freire E, Kwong PD, Roux KH, Sodroski J, Wyatt R: Soluble mimetics of human immunodeficiency virus type 1 viral spikes produced by replacement of the native trimerization domain with a heterologous trimerization motif: characterization and ligand binding analysis. *J Virol* 2005, **79**:9954-9969.
  54. Si Z, Phan N, Kiprilov E, Sodroski J: Effects of HIV type 1 envelope glycoprotein proteolytic processing on antigenicity. *AIDS Res Hum Retroviruses* 2003, **19**:217-226.
  55. Morris AE, Remmele RL, Klinke R, Macduff BM, Fanslow WC, Armitage RJ: Incorporation of an isoleucine zipper motif enhances the biological activity of soluble CD40L (CD154). *J Biol Chem* 1999, **274**:418-423.
  56. Stone GW, Barzee S, Snarsky V, Spina CA, Lifson JD, Pillai VK, Amara RR, Villinger F, Kornbluth RS: Macaque multimeric soluble CD40 ligand and GITR ligand constructs are immunostimulatory molecules in vitro. *Clin Vaccine Immunol* 2006, **13**:1223-1230.
  57. Haswell LE, Glennie MJ, Al-Shamkhani A: Analysis of the oligomeric requirement for signaling by CD40 using soluble multimeric forms of its ligand, CD154. *Eur J Immunol* 2001, **31**:3094-3100.
  58. Maurais E, Cantin R, Tremblay MJ: Human immunodeficiency virus type 1-anchored CD40 ligand induces secretion of the chemokine interleukin-8 by human primary macrophages. *Virology* 2009, **385**:227-232.
  59. Shan M, Klasse PJ, Banerjee K, Dey AK, Iyer SP, Dionisio R, Charles D, Campbell-Gardener L, Olson WC, Sanders RW, Moore JP: HIV-1 gp120 mannoses induce immunosuppressive responses from dendritic cells. *PLoS Pathog* 2007, **3**:e169.
  60. Li W: Synergistic antibody induction by antigen-CD40 ligand fusion protein as improved immunogen. *Immunology* 2005, **115**:215-222.
  61. Chen HW, Huang HI, Lee YP, Chen LL, Liu HK, Cheng ML, Tsai JP, Tao MH, Ting CC: Linkage of CD40L to a self-tumor antigen enhances the antitumor immune responses of dendritic cell-based treatment. *Cancer Immunol Immunother* 2002, **51**:341-348.
  62. Huang HI, Wu PY, Teo CY, Chen MN, Chen YC, Silin D, Tao MH: Improved immunogenicity of a self tumor antigen by covalent linkage to CD40 ligand. *International Journal of Cancer* 2004, **108**:696-703.
  63. Manoj S, Griebel PJ, Babiu LA, Littel-Van Den Hurk SV: Modulation of immune responses to bovine herpesvirus-1 in cattle by immunization with a DNA vaccine encoding glycoprotein D as a fusion protein with bovine CD154. *Immunology* 2004, **112**:328-338.
  64. Gares SL, Fischer KP, Congly SE, Lacoste S, Addison WR, Tyrrell DL, Gutfreund KS: Immunotargeting with CD154 (CD40 ligand) enhances DNA vaccine responses in ducks. *Clin Vaccine Immunol* 2006, **13**:958-965.

doi:10.1186/1742-4690-8-48

**Cite this article as:** Melchers *et al.*: A stabilized HIV-1 envelope glycoprotein trimer fused to CD40 ligand targets and activates dendritic cells. *Retrovirology* 2011 **8**:48.

**Submit your next manuscript to BioMed Central  
and take full advantage of:**

- Convenient online submission
- Thorough peer review
- No space constraints or color figure charges
- Immediate publication on acceptance
- Inclusion in PubMed, CAS, Scopus and Google Scholar
- Research which is freely available for redistribution

Submit your manuscript at  
www.biomedcentral.com/submit

