

Research

Open Access

Evolution of antibody landscape and viral envelope escape in an HIV-1 CRF02_AG infected patient with 4E10-like antibodies

Tessa Dieltjens*¹, Leo Heyndrickx¹, Betty Willems¹, Elin Gray², Lies Van Nieuwenhove³, Katrijn Gruppings¹, Guido Vanham^{1,4} and Wouter Janssens¹

Address: ¹Department of Microbiology, Unit of Virology, Institute of Tropical Medicine, Antwerp, Belgium, ²National Institute for Communicable Diseases, Johannesburg, South Africa, ³Department of Parasitology, Unit of Parasite Diagnostics, Institute of Tropical Medicine, Antwerp, Belgium and ⁴Department of Biomedical Sciences, University of Antwerp, Antwerp and Faculty of Medicine and Pharmacy, Free University of Brussels, Belgium

Email: Tessa Dieltjens* - tdieltjens@itg.be; Leo Heyndrickx - lheyndrickx@itg.be; Betty Willems - bwillems@itg.be; Elin Gray - eling@nicd.ac.za; Lies Van Nieuwenhove - lvnieuwenhove@itg.be; Katrijn Gruppings - kgruppings@itg.be; Guido Vanham - gvanham@itg.be; Wouter Janssens - wouterjanssens@live.be

* Corresponding author

Published: 14 December 2009

Received: 1 September 2009

Retrovirology 2009, **6**:113 doi:10.1186/1742-4690-6-113

Accepted: 14 December 2009

This article is available from: <http://www.retrovirology.com/content/6/1/113>

© 2009 Dieltjens et al; licensee BioMed Central Ltd.

This is an Open Access article distributed under the terms of the Creative Commons Attribution License (<http://creativecommons.org/licenses/by/2.0>), which permits unrestricted use, distribution, and reproduction in any medium, provided the original work is properly cited.

Abstract

Background: A minority of HIV-1 infected individuals develop broad cross-neutralizing (BCN) plasma antibodies that are capable of neutralizing a spectrum of virus variants belonging to different HIV-1 clades. The aim of this study was to identify the targeted epitopes of an individual with BCN plasma antibodies, referred to as ITM4, using peptide phage display. This study also aimed to use the selected mimotopes as tools to unravel the evolution of the antibody landscape and the viral envelope escape which may provide us with new insights for vaccine design.

Results: This study led us to identify ITM4 plasma antibodies directed to the 4E10 epitope located in the gp41 membrane-proximal external region (MPER). Analysis of antibody specificities revealed unusual immunogenic properties of the ITM4 viral envelope, as not only the V3 loop and the gp41 MPER but also the C1 and lentivirus lytic peptide 2 (LLP2) region seem to be targets of the immune system. The 4E10-like antibodies are consistently elicited during the 6-year follow up period. HIV-1 ITM4 pseudoviruses showed an increasing resistance over time to MPER monoclonal antibodies 4E10 and 2F5, although no changes are found in the critical positions of the epitope. Neutralization of COT6.15 (subtype C; 4E10-sensitive) pseudoviruses with alanine substitutions in the MPER region indicated an overlapping specificity of the 4E10 monoclonal antibody and the ITM4 follow up plasma. Moreover the 4E10-like antibodies of ITM4 contribute to the BCN capacity of the plasma.

Conclusions: Using ITM4 BCN plasma and peptide phage display technology, we have identified a patient with 4E10-like BCN antibodies. Our results indicate that the elicited 4E10-like antibodies play a role in virus neutralization. The viral RNA was isolated at different time points and the ITM4 envelope sequence analysis of both early (4E10-sensitive) and late (4E10-resistant) viruses suggest that other regions in the envelope, outside the MPER region, contribute to the accessibility and sensitivity of the 4E10 epitope. Including ITM4 specific HIV-1 Env properties in vaccine strategies may be a promising approach.

Background

During the course of Human Immunodeficiency Virus 1 (HIV-1) infection, a huge variety of HIV-1 variants, termed 'quasispecies' are generated. This is driven by a high mutation rate and a high turnover rate of HIV-1 *in vivo*, as well as by selective immune responses. In response to the high degree of antigenic polymorphism, HIV-1 infected patients develop a strong and persistent immune response characterized by CD8⁺ cytotoxic T-lymphocyte activity and the production of HIV-1 specific antibodies. Antibodies with neutralizing capacities against primary isolates emerge after seroconversion relatively late, and their neutralization spectrum broadens over time [1,2]. Broad cross neutralizing (BCN) antibodies that target conserved regions on diverse HIV-1 clades are generated in a minority of the infected patients during natural infection. Nevertheless some BCN monoclonal antibodies that neutralize HIV-1 *in vitro* have been identified and include IgG b12 (directed against the CD4 binding site), 2G12 (anti-gp120 carbohydrate), 2F5 (anti-gp41) and 4E10 (anti-gp41). Out of this small panel of BCN monoclonal antibodies, 4E10 has the most broadly neutralizing activity described to date [3]. Studies applying passive immunization with these monoclonal antibodies show protection against *in vivo* challenges with SHIV in rhesus macaques [4-7]. In humans, the passive transfer of neutralizing monoclonal antibodies 2G12, 2F5, and 4E10 resulted in a delay of HIV-1 rebound after cessation of antiretroviral therapy [8]. As such, it is hoped that by inducing a sufficiently high BCN antibody concentration in addition to antiviral CD8⁺ lymphocyte immunologic responses through vaccination, an individual might be protected against HIV-1 by any natural transmission route. One of the current challenges remains to generate immunogens that are capable of inducing a high titer of neutralizing antibodies. However, using envelope (Env) proteins presenting these neutralizing epitopes has not yet resulted in eliciting BCN antibody responses as measured by commonly used neutralization assays [9,10]. The optimal presentation of the corresponding neutralization epitopes may be restricted to the conformational Env context of particular virus variants that induce these antibodies in natural infection [11-14].

In the present study we aimed at unravelling the antigenic landscape of the HIV-1 Env of ITM4, a CRF02_AG infected patient with BCN antibodies, using M13 phage display peptide libraries. Peptide phage display is a simple methodology for screening interactions between antibodies and their epitopes with the major advantage that both linear and conformational B-cell epitopes can be identified without pre-existing notions about the nature of the interaction. Previously, several groups used this technology to successfully map the epitope specificities of serum neutralizing antibodies of HIV-infected individuals. We subse-

quently tested several mimotopes as immunogens [15-17]. We explored the targets of neutralizing antibodies present in the patient's plasma and investigated the evolution of the humoral immune responses during disease progression. The results of the panning revealed the presence of 4E10-like antibodies. Studies by Yuste *et al.* [18] suggest that 4E10 and 2F5-like neutralizing specificities are rare in HIV-1 infected individuals. Furthermore, the initial isolation of the monoclonal antibodies (Mabs) 2F5 and 4E10 was done without reference to the original blood donors; so the viruses of the respective donors have never been isolated and identified. Therefore, studies analyzing the virus envelope evolution in patients with 2F5 or 4E10-like antibodies are of great interest. Recently, an HIV-1 infected patient with 2F5-like antibodies was discovered and analyzed in detail by Shen *et al.* [19]. In addition to this finding, we report here on a patient with 4E10-like antibodies, which we refer to as ITM4. We describe four functional envelope clones isolated at different time points during disease progression. The correlation between viral escape and the presence or appearance of several antibodies was explored. The contribution of the 4E10-like antibody in the broad cross neutralizing activity of the plasma was further examined.

Results

Identification of patient ITM4

ITM4 is a male HIV-1 Circulating Recombinant Form CRF02_AG infected individual, who has been infected by heterosexual transmission. He first consulted the Institute of Tropical Medicine in 2001. Between 2001 and 2007, his viremia increased from 42,000 copies/ml (sample ITM4_01.1) to 330,000 copies/ml (sample ITM4_07.2), and his CD4 T cell counts decreased from 550 per mm³ (sample ITM4_01.1) to 250 per mm³ (sample ITM4_07.2) (Fig. 1). During this follow up period, patient ITM4 never received anti-retroviral therapy. ITM4 was selected for the unique capacity of his plasma, taken in 2005 (further referred to as ITM4_05) to neutralize a broad spectrum of primary virus isolates from subtypes A (3/4), B (2/4), C (4/4), D (4/4), CRF01_AE (4/4) and CRF02_AG (5/5) in a primary virus/PBMC neutralization assay (Table 1)[20]. The BCN capacity of his plasma was confirmed for a sample taken in 2007 in a pseudovirus/TZM-bl assay (Table 1). The panel of pseudoviruses tested was neutralized with ID50s ranging between 33 and >640, with the subtypes C and D Envs being the most sensitive and subtypes B Envs being more neutralization resistant.

Peptide phage selection and localization

In order to map the antibody responses directed against the HIV-1 envelop in patient ITM4, peptide phage display technology was applied. A random 12-mer phage library was panned against a pool of ITM4 plasma samples. After 3 selection rounds, peptide sequences were deduced for

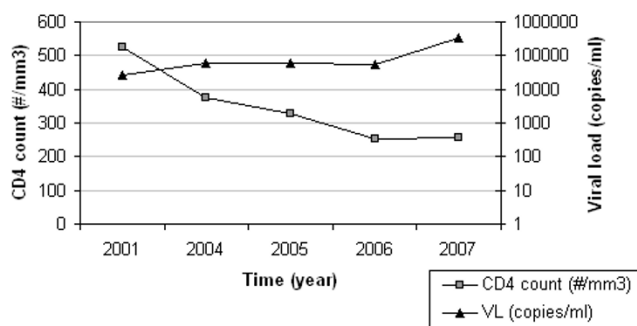


Figure 1
CD4+ T-cell numbers and viral loads detected in follow up plasma samples of ITM4 over a period of 6 years.

phage displaying positive reactivity in ELISA with ITM4 plasma, as well as low or no reactivity with an HIV negative plasma pool. The generated peptide sequences were aligned and ranked according to homology, resulting in four groups of peptide sequences with a commonly similar motif (Table 2). Phage clones presenting a peptide with a NWFNLTQTLMPR motif were predominantly documented ($n = 18$); twelve peptide phages represented the KxWWxA motif. Furthermore, mimotopes with a SLxxLRL motif ($n = 7$) and a KxxxIGPHxxY motif ($n = 3$) were identified. Peptide sequences were compared with the linear Env sequences of ITM4 to localize each of the mimotope groups. The NWFNLTQTLMPR peptide shares key amino acid residues of the 4E10 epitope [WFx(I/L)(T/S)xx(L/I)W] located in the membrane-proximal external region (MPER) of gp41 [21,22]. Mimotopes with the KxxxIGPHxxY motif showed homology to the crown of the V3 loop of the ITM4 gp160 sequences (Table 2). The KxWWxA motif shared linear homology to C1 sequences of ITM4 isolates of 2007 (Fig. 2). A last group of mimotopes sharing the SLxxLRL motif is predicted to bind antibodies directed to the lentivirus lytic peptide 2 (LLP2) region of gp41.

Recognition of the ITM4 phage mimotopes by other HIV-1 infected individuals

In a capture ELISA, eighty random plasma samples of HIV-1 positive individuals were screened for antibody cross reactivity to the selected ITM4 peptide phage groups. The highest cross-reactivity was seen for the mimotope representing the immunodominant part of the V3 region, ten (12.5%) of the tested HIV1 plasma had antibodies that bound this mimotope (Table 2). The mimotope localized in the gp41 MPER is more exclusive; it was only recognized by one plasma sample (later referred as CrossR1). This is in accordance with previous publications indicating that antibodies against the MPER are

found in a minority of HIV infected individuals [18,23-25]. The random plasma samples also showed a very weak cross reactivity (1/80) towards the LLP2 mimotope, while none of the plasma samples that were tested recognized the C1 mimotope. This result indicated that this epitope is unique for the virus circulating in ITM4.

Evolution of the antibody development in ITM4 follow up plasma samples

Next, an ELISA was performed to determine the reactivity of the different phage groups with the individual plasma follow up samples of ITM4 (2001-2007) (Fig. 3). Reactivity patterns of the peptide phage groups with ITM4 follow up plasma were not uniform. Each phage group had a unique reaction pattern: (1) Antibodies elicited against the MPER (NWFNLTQTLMPR) mimotope were already present in 2001 and showed a comparable high reactivity in all the follow up samples, whereas (2) the antibodies against the C1 (KxWWxA) mimotope were absent in most of the samples and only appeared in the plasma samples taken in 2007. The V3-specific antibodies (3) showed a gradual decreasing reactivity over time; in contrast (4) an increase of binding antibodies is seen for the LLP2 (SLxxLRL) mimotope. These data demonstrate that the antibody development in ITM4 is a continuously dynamic event.

Specificity of the MPER mimotope

To further explore the characteristics of the antibodies binding to the NWFNLTQTLMPR mimotope, additional ELISA experiments were performed. First, the ability of the monoclonal antibody 4E10 to bind this phage peptide was analyzed. We observed a high signal ($OD = 3.0$) when 4E10 was added to the mimotope, indicating the ability of the NWFNLTQTLMPR peptide to bind 4E10-like antibodies (Fig. 4). In a second part of the experiment, different peptides overlapping the 4E10 region were used in a competition ELISA. The results clearly demonstrated that peptide 6376 obtained from the NIH AIDS Reagent Program, SLWNWFDITNWLWYI, presenting the 4E10 epitope, strongly competed with the peptide phage for 4E10-binding (Fig. 4). A similar observation was made for the plasma from ITM4 (Fig. 4), the same peptide occupied the binding places for the antibodies binding the NWFNLTQTLMPR mimotope as for the monoclonal antibody 4E10. Taken together, the results above suggest that 4E10-like antibodies are present in our subject of interest.

Autoreactive antibodies

As shown by Haynes *et al.* [26] and Scherer *et al.* [27], Mab 4E10 has an affinity for the autoantigen cardiolipine (CL), due to the epitope position which is recognized in the context of the viral membrane. In our study, the cross-reactivity to CL of five broadly cross neutralizing plasma samples was analyzed, including both patients with anti-

Table 1: Neutralization profile of patient ITM4 in a primary virus/PBMC assay (left) and a pseudovirus/TZM-bl assay (right)

Subtype	PBMC/Primary Virus Assay Virus	Plasma Sample ITM4_05 % Neutralization ^a	Pseudovirus/TZM bl Assay Pseudovirus	Plasma Sample ITM4_07 ID50 ^b
A	VI 191	66	PV 92RW009	222
	92UG037	100	PV PIC 32281	54
	VI 820	99		
	VI 1031	100		
B	89.6	0	PV SF162	322
	93US076	69	PV JRFL	88
	93US077	97	PV AC10	62
	93US143	100	PV CAAN	33
C	VI 829	80	PV VI 829	180
	VI 882	99	PV VI 882	316
	VI 1358	99	PV VI 1358	208
	VI 1144	100	PV 92BR025	155
			PV Du174	333
D	VI 656	97	PV UG024	>640
	VI 693	100		
	VI 824	91		
	VI 865	93		
CRF01	VI 1249	98	PV CM244	93
	CA 10	97		
	VI 1888	96		
	92TH022	99		
CRF02	VI 1090	94	PV VI 1090	221
	CA18	88	PV CA18	63
	VI 2680	99		
	VI 1380	98		
	VI 2727	93		

^a % neutralization obtained with 1:20 plasma dilution, ≥80% reduction in virus titer is indicated in bold.

^b Plasma dilution causing 50% reduction of relative light units compared to the virus control, ID50 ≥50 is indicated in bold.

bodies against the NWFNLTQTLMPR mimotope: ITM4 and CrossR1. The presence of anti-CL antibodies was measured in an ELISA, and plasma samples were ranked according to their reactivity, with >20 GPL units categorized as positive; 10-20 GPL units as weakly positive, and < 10 GPL units as negative. Plasma ITM4_07 showed the highest reactivity (34 GPL units) and thus scored strongly positive. The second highest score (16 GPL units) was obtained with plasma from patient CrossR1. Two other BCN plasma were weakly positive (12 and 11 GPL units

respectively), one BCN plasma scored negative (8 GPL units) (data not shown). Additionally, we analyzed the presence of other auto-antibodies (anti dsDNA, anti Ro/Ssa, and anti Jo1 antibodies) in the selected plasma samples. None of the samples showed positive reactivity with any of these auto-antigens (data not shown).

We further noted that the clinical status of patient ITM4 was regularly followed between 2001 and 2007 by the team of medical doctors at the clinic of the Institute of

Table 2: Overview of the selected mimotope groups

Mimotope AA Motif	Location in the ITM4 Env Sequence	Times Selected	Cross Reactivity ^a
NWFNLTQTLMPR	gp41 MPER region	18	1/80 (1.3%)
KxWWxA	gp120 C1 region	12	0/80 (0.0%)
SLxxLRL	gp41 LLP2 region	7	1/80 (1.3%)
KxxxIGPHxxY	gp120 V3 region	3	10/80 (12.5%)

^a Number of HIV-1+ plasma samples cross-reacting with the mimotope group.

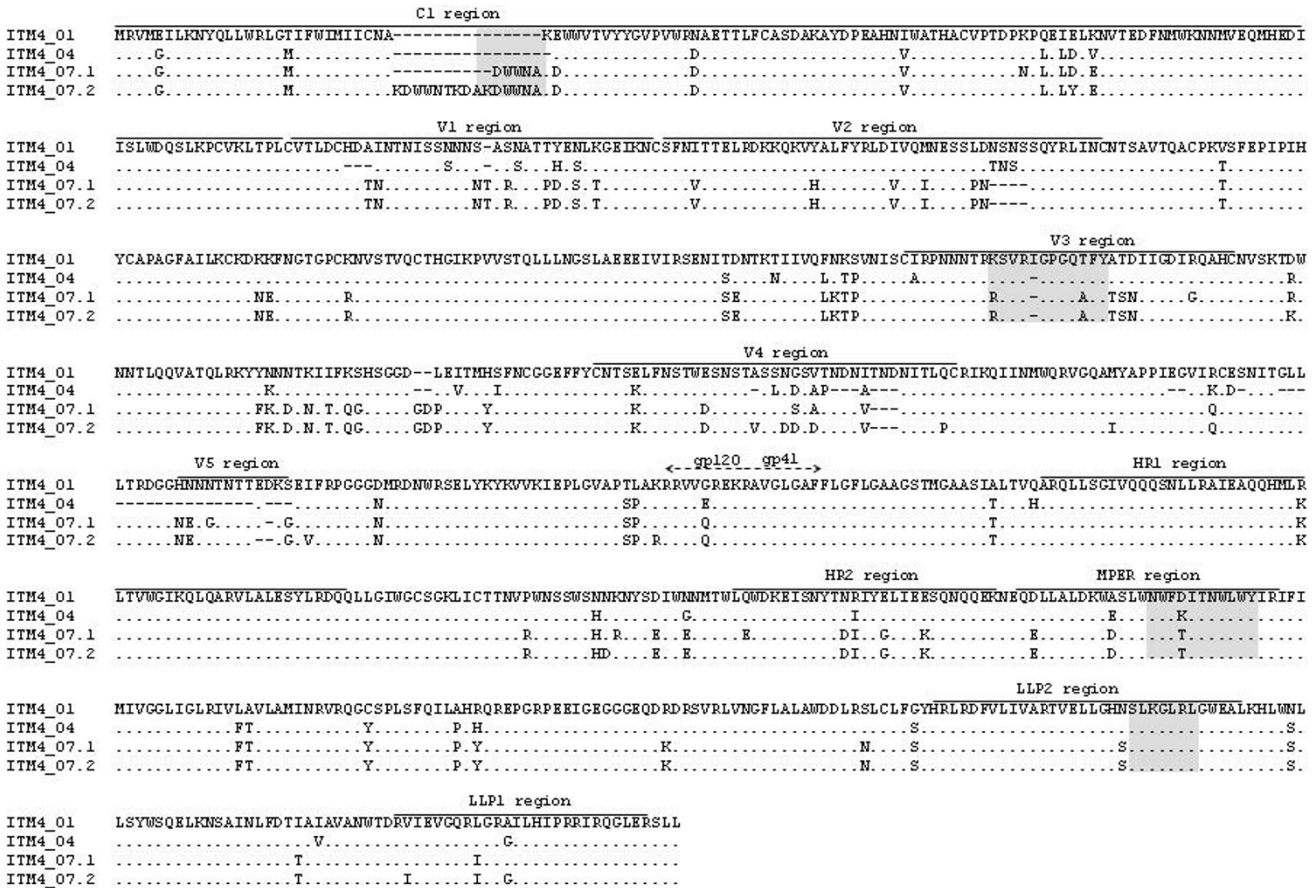


Figure 2
Env amino acid alignment of ITM4 follow-up pseudoviruses. Dots are included for alignment purposes. Mimotope localizations are highlighted in grey.

Tropical Medicine (Antwerp, Belgium). The fact that no symptoms of auto-immune disease were reported in this follow up period, suggests that the ITM4 antibodies reacting with the CL autoantigen are non-pathogenic, induced by the HIV-infection, and are not present due to an autoimmune disorder [28].

Genotypic Analysis of the MPER of ITM4

MPER sequences of 4 clones per follow-up sample (n = 7) were generated and analyzed (Fig. 5). For clones of samples ITM4_01.1 and ITM4_01.2 taken in 2001, two diverse 2F5 epitope variants were documented: ALDKWA and ALNKWA, having a D664N substitution. Clones of samples from 2004 and later time points displayed wild type ALDKWA and/or A667 mutant sequences (Fig. 5). ALDKWA represents the consensus subtype A 2F5 epitope, whereby the DKW motif is crucial for binding 2F5 [29,30]. The D664N substitution resulting in ALNKWA, has been described as a 2F5 escape variant with a lower

and still relatively high infectivity *in vitro* and displaying resistance to 2F5 neutralization [31].

The 4E10 epitope of clones of ITM4 follow-up samples did not present mutations in key amino acids [WFx(I/L)(T/S)xx(L/I)W]. The subtype A 4E10 epitope NWFDIT-NWLW was conserved in clones of samples ITM4_01.1 and ITM4_01.2 taken in 2001. Clones of 2004 and samples of later time points displayed D674 mutant sequences. One N677K mutation is seen in a clone isolated from the 2005 sample. Both mutations at position 674 and 677 do not confer resistance to 4E10 [21], but substitutions at these positions may have an impact on 4E10 neutralization sensitivity [32].

Neutralization sensitivity of functional ITM4 clones

To investigate the autologous neutralizing activity, we cloned and pseudotyped full length envelope genes of functional clones from 4 different time points (2001, 2004, 2007.1, 2007.2) and examined the sensitivity of the

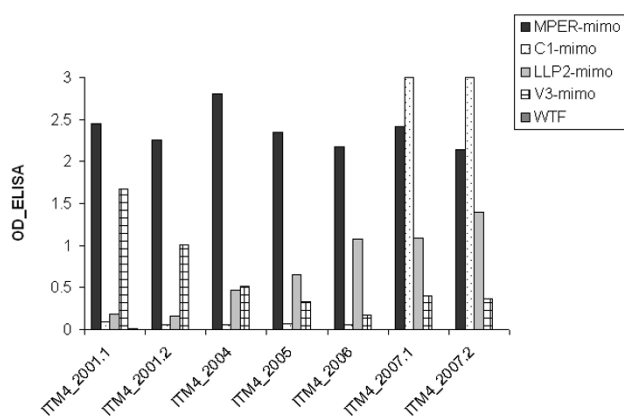


Figure 3
Reactivity in ELISA of ITM4 follow up plasma samples between 2001 and 2007 with the selected mimo groups. (WTF: wild type phage).

variants to autologous plasma of the same time points in a pseudovirus/TZM-bl assay. At all of the time points analyzed, the titers against earlier virus were higher than against contemporaneous or later virus, suggesting a constant change in immune pressure and viral escape (Table 3). The highest neutralizing activity was seen against the earliest pseudovirus (PV ITM4_01), lower neutralization sensitivity was observed for the clones of later time points (PV ITM4_07.1 and PV ITM4_07.2).

Cross neutralizing monoclonal antibodies 4E10, 2F5, 2G12 and b12 were used to identify the neutralization sensitivity patterns of the four different ITM4 pseudoviruses. Large variation in neutralization susceptibility of the pseudoviruses was seen, as shown in Table 3. The earliest virus (PV ITM4_01), isolated in 2001, was very sensitive to both 4E10 and 2F5, with IC50s at concentrations 0.23 and 0.21 $\mu\text{g/ml}$ respectively. The isolate from 2004 (PV ITM4_04), showed already a 50-fold decrease in sensitivity to 4E10 and a 90-fold decrease in sensitivity to 2F5. The virus isolates from 2007 (PV ITM4_07.1 and PV ITM4_07.2) showed complete resistance to 2F5 (>25 $\mu\text{g/ml}$) and demonstrated also very low (17.4 $\mu\text{g/ml}$; PV ITM4_07.1) or no (>25 $\mu\text{g/ml}$; PV ITM4_07.2) sensitivity to 4E10. Notably, the emerging virus was able to create resistance to 2F5 and 4E10 during disease progression. No neutralization of any of the pseudoviruses was observed by Mab b12 (25 $\mu\text{g/ml}$), and only one of the four isolates (PV ITM4_04) showed moderate susceptibility to 2G12 (with an IC50 at 12.75 $\mu\text{g/ml}$).

Evolution of the viral envelope

Sequence variability over time in the HIV-1 envelope of ITM4 was examined in the infectious pseudotyped viruses; the functional clones were sequenced and aligned

(Fig. 2). To determine whether the evolution of Env correlated with the development of HIV-1 antibodies in ITM4, we analyzed the target regions of the ITM4 antibodies. The V3 region of the generated variants shows only a small amount of variation. The decrease in titer of V3 antibodies over time in patient ITM4 (Fig. 3) can therefore not be explained by mutations or deletions or insertions in the V3 sequence respectively. One suggestion could be that other regions in gp120 influence the presentation and accessibility of the V3 loop [33]. The second region of interest is the first constant region (C1) of gp120, an amino acid sequence AKxWWx present in ITM4_01 was duplicated in ITM4_07.1 and triplicated in ITM4_07.2. This multiplication event in the C1 region is very unusual and unique for the virus circulating in ITM4, as none of the Env references available from the HIV Database <http://www.hiv.lanl.gov> show a similar insertion. The expansion of the Env C1 region as a result of the insertion of the AKxWWx sequence seems to stimulate the immune system to produce antibodies against this sequence. As shown in Figure 3, high titers of antibodies were found in both 2007 plasma samples directed against the KxWWxA mimotope. A third target region of the anti-HIV envelope antibodies is the LLP2 region in gp41. The presence of antibodies directed against this part of gp41 supports the possibility that the LLP2 domain is (transiently) exposed. Antibody titers in the follow up plasma samples suggest an enhanced exposure in clones at later time points. Only one amino acid substitution is seen in the LLP2 domain, a hydrophilic asparagine (N) at position R788 left of the SLxxLRL mimotope, is changed to a serine (S) in the isolates from 2007. The last target of the ITM4 antibodies is part of the MPER of gp41. In none of the clones sequenced was significant substitutions found in this region, as discussed above, despite the high antibody titers found in all the follow up plasma samples.

Contribution of 4E10-like antibodies to neutralization

We next tested if the ITM4 antibodies sharing the 4E10 epitope may contribute to or be responsible for the BCN capacity of ITM4. For this purpose, a panel of mutant viruses (COT6.15 mutants) with substitutions of charged amino acids for alanine residues at positions 667 to 680 in the MPER of gp41 was used. The variation in neutralization sensitivity of wild type COT6.15 virus and mutants was measured in a pseudovirus/TZM-bl assay. We analyzed changes in IC50 values of two ITM4 plasma samples (ITM4_01 and ITM4_07). The CrossR1 sample and Mab 4E10 were included as controls. Results from these experiments are shown in Table 4. For all samples tested, an increased neutralization resistance is observed when residues were replaced at positions N668A, F673A and D674A. Substitution at position T676A decreased the sensitivity of all the samples except for ITM4_07.

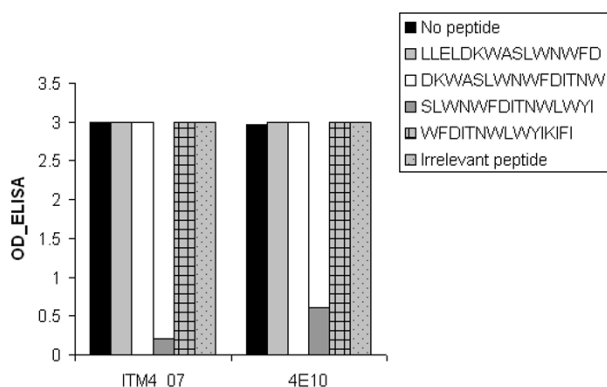


Figure 4
Competitive ELISA screening peptides for their ability to compete with the 4E10 mimotope in binding to ITM4 plasma and 4E10 Mab. Overlapping peptides stretching the 2F5 and 4E10 epitopes are used for competition. An irrelevant peptide was included as negative control.

Substitutions at positions W672A and W680A, seem to only have a significant impact on the IC₅₀ for the control Mab 4E10. The IC₅₀ values were not changed dramatically by the respective charged residue-to-alanine replacement at the other positions (667, 669, 670, 671, 675, 677, 678 and 679). Overall, our results indicate the presence of 4E10-like antibodies in both ITM4 plasma and CrossR1 plasma of which the epitope overlaps with the Mab 4E10 epitope in key positions for neutralization. The decrease in neutralization capacity of ITM4 by the introduced substitutions in the region overlapping the 4E10 epitope confirmed that the 4E10-like antibodies present in the plasma samples of 2001 and 2007 do contribute to the neutralization breadth in this patient.

Discussion

The search for a prophylactic HIV vaccine is focused on the discovery of novel antibody specificities and their associated viral epitopes that could be useful for immunogen design. Recently, several groups studied the specificities of BCN antibodies and revealed that antibodies directed to the gp120 CD4 binding site and the gp41 MPER contribute to the exceptional neutralizing capacity of BCN plasma samples [23-25,34]. Besides this, they noted that a major part of the neutralizing activity still remains undefined, and therefore efforts to map additional neutralizing epitopes may be useful for the development of an HIV vaccine. In this study we aimed to identify key epitopes of HIV-1 Env involved in the broadly cross neutralizing capacity of patient ITM4. Plasma of this subtype CRF02_AG infected individual was screened using M13 peptide phage display libraries in order to identify the epitopes that are potentially involved in the

generation of ITM4's neutralizing responses against a wide variety of HIV-1 strains. In order to select peptide phage corresponding to linear and conformational Env epitopes, potentially binding neutralizing antibodies, we adopted a strategy of positive and negative selections. The mimotope sequences of the ITM4 specific peptide phage were determined and localized in the gp160 sequence. Four groups of mimotopes were identified, the so called MPER mimotopes, the V3 mimotopes, the C1 mimotopes and the LLP2 mimotopes, indicating that phage libraries can be applied to identify various Env epitopes, as previously published [16,17,35]. Evaluation of peptide phage for antibody binding in ITM4 follow-up samples revealed a different pattern for each of the peptide phage, illustrating the dynamic process between immune system and virus. Of interest, the only region which is immunogenic over the complete follow up period is the MPER epitope. Antibodies against the AKxWWN epitope in the C1 region only appear after a multiplication of this sequence. The V3 epitope seems to be less accessible on the later viruses. In contrast, the LLP2 epitope is more exposed on the later viruses than on the earlier viruses. A study by Lu *et al.* showed that the LLP2 region, which is part of the cytoplasmic tail of gp41, is transiently exposed during the fusion process of the virus with the target cell [36]. A slower fusion process could cause the appearance of antibodies against this region. Variation in time may contribute to the escape from antibody pressure directed to the Env receptor domains by changing the exposure of neutralization sensitive epitopes [37-39].

As the MPER is known to be an interesting target for vaccine design, we focused our experiments on the MPER antibodies present in the studied patient. The identification of naturally induced 4E10-like antibodies is of major importance as 4E10 binds and neutralizes virtually all HIV-1 viruses regardless of their subtype [3]. Besides, the 4E10 epitope is conserved in all HIV-1 viruses and thus is crucial for infection. Our observations support results made by others showing that antibodies against the 4E10 epitope are rarely encountered in HIV-1 positive individuals [18,23-25]. Only one of the eighty HIV-1+ plasma tested in our binding study cross-reacted with the MPER mimotope. A detailed study of both ITM4's viral envelope and antibody landscape could provide crucial information on how to present the epitope in an ideal way to the immune system to induce potent neutralizing antibodies since the Env of the ITM4 virus may have adapted a conformation whereby the 4E10 epitope is exposed to the immune system.

Firstly, the specificity of the antibody binding the MPER-mimotope was characterized in a competition assay by screening overlapping peptides that map the 2F5 and 4E10 epitope. This test proved that both the ITM4 MPER-

660	2F5	670	4E10	681	Plasma sample ^a	Year ^b	# Clones ^c
NEQDLLALDKWASLWNWF	<u>LDKWASLWNWF</u>		<u>IXITNWLWY</u>				
.....N.....D.....					ITM4_01.1	2001	3
.....D.....					ITM4_01.1	2001	1
.....D.....					ITM4_01.2*	2001	2
.....N.....D.....					ITM4_01.2	2001	2
.....E.....K.....					ITM4_04.1*	2004	1
.KH.....E.....					ITM4_04.1	2004	1
.....E.....T.....					ITM4_04.1	2004	1
..H.....E.....					ITM4_04.1	2004	1
.....E.....T.....					ITM4_05.1	2005	3
.....E.....T..K....					ITM4_05.1	2005	1
..H.....E.....					ITM4_06.1	2006	3
.....D.....T.....					ITM4_06.1	2006	1
...E.....D.....T.....					ITM4_07.1*	2007	4
...E.....D.....T.....					ITM4_07.2*	2007	3
.G.E.....D.....T.....					ITM4_07.2	2007	1

Figure 5
Sequence characteristics of the gp41 MPER of ITM4 viruses isolated at different time points. The consensus MPER sequence is designated in the first line. The core epitopes of 2F5 and 4E10 are indicated, the key amino acid residues of both epitopes are underlined. MPER sequences derived from a functional Env clone are marked by an asterisk. ^a Plasma samples used for viral RNA isolation. ^b Year of sampling. ^c Number of clones having this motif.

directed antibodies and the Mab 4E10 had a binding affinity for the same epitope. Secondly, as the 4E10 epitope is located close to the viral membrane, the monoclonal antibody 4E10 is shown to both bind lipids from the membrane as well as the peptide epitope located on the envelope [40]. As a consequence of this affinity for the lipid membrane, the antibody was previously described as autoreactive, binding the autoantigen cardiolipin [26,27]. The ELISA results indicated high cross-reactivity with cardiolipin in the ITM4 plasma sample. This high cross-reactivity

supports our presumption that 4E10-like antibodies are circulating in the patient.

In a next phase, we took a closer look at the viral envelope of ITM4. The neutralization profiles were determined using pseudotyped viruses expressing Envs of different time points. The autologous neutralization data of patient ITM4 suggest a continuous escape of the virus from antibody pressure over six years. The evolving humoral immune response is rather high in potency against the

Table 3: Susceptibility of ITM4 pseudoviruses isolated at different time points to neutralization by autologous plasma and by Mabs.

Neutralizing activity of	Autologous follow up plasma samples (ID50) ^a					Monoclonal Antibodies (IC50) ^b			
	ITM4_2001	ITM4_2004	ITM4_2005	ITM4_2007.1	ITM4_2007.2	MAb 4E10	MAb 2F5	MAb 2G12	MAb b12
Pseudoviruses (PV)									
PV ITM4_01	540	1905	>4680	4650	4475	0.23	0.21	>25	>25
PV ITM4_04	118	194	255	219	216	11.5	19	>25	>25
PV ITM4_07.1	<25	<25	<25	111	33	17.4	>25	12.75	>25
PV ITM4_07.2	<25	<25	<25	67	33	>25	>25	>25	>25

^a Plasma dilution causing 50% reduction of relative light units compared to the virus control.
^b Antibody concentration (µg/ml) causing 50% reduction of relative light units compared to the virus control.

earliest autologous virus. The latest virus exhibited very low sensitivity to the latest plasma samples and resistance to the earlier autologous plasma samples, which can be due to a continuing evolution of the viral envelope sequence. The neutralization experiments with the MPER monoclonal antibodies 2F5 and 4E10 revealed an interesting phenomenon. The earliest virus seems to be very sensitive to both monoclonal antibodies, suggesting that this region is highly accessible on the viral envelope. However, a decreased sensitivity to neutralization by 2F5 and 4E10 was seen for the second pseudovirus, isolated 3 years after the first one was found. The most recent viral envelope, isolated 6 years after the first one, is phenotypically resistant to both MPER Mabs 2F5 and 4E10, indicating that neutralization escape mutants had emerged and that the 4E10-like antibodies are exerting pressure on viral replication. In order to escape from antibody pressure a virus can change the epitope specifically targeted by the antibody or influence the presentation of the epitope by changing the structural context through mutations in other regions. Specifically, the accessibility of the gp41 epitopes to neutralizing antibodies may be sterically blocked by the folding of the variable loops of gp120 and/or the glycan shield in gp120 or other regions of gp41 [41]. A study by Zwick *et al* [30] revealed the amino acid positions in the MPER which cause resistance to 2F5 and 4E10 neutralization by inducing alanine substitutions in both epitopes. For 2F5, the positions D664, K665 and W666 play a major role in the binding and recognition of the epitope. In the case of 4E10, resistance occurred by substitutions at position W672, F673 and W680. Our

analysis of the MPER of the infectious ITM4-pseudoviruses could not correlate phenotypical resistance to both Mabs 4E10 and 2F5 with changes in the critical amino acid positions of their epitopes. In another study by Gray *et al*. [32], 4E10 resistant escape mutants were described; those authors identified some additional positions which may influence the presentation of the 4E10 epitope and thereby change the sensitivity of the viral envelope to 4E10 neutralization. In the latter study, both N674 and N677 had an effect on the sensitivity to 4E10, and we observed a amino acid change at position N677 at different time points. Moreover it was shown that changes in the LLP2 region also could interfere with the sensitivity to Mab 4E10 [32]. This raised the possibility that other regions outside the MPER may be responsible also for the occurrence of resistance against the MPER Mabs. It is not clear if the mutation of the ITM4 virus in the LLP2 region on its own, or in combination with N677, affects the 4E10 sensitivity; nevertheless simultaneously with the occurrence of 4E10 resistance, the antigenicity of the LLP2 region increases, suggesting a change in the envelope structure. Another remarkable change in the gp160 sequence during Env evolution is the unique insertion in the C1 region. The C1 region is part of the inner domain of the gp120 core and interacts with gp41, contributing to the non-covalent binding of gp41 and gp120. Mutagenic studies showed the important role of this region on viral entry [42]. Together with the fact that the C1 region is known to be less variable [43], the C1 epitopes are interesting targets for neutralizing antibodies. Previously, a report by Sreepian *et al*, described the presence of antibody-

Table 4: The effect of charged residue-to-alanine replacement on neutralization capacity of ITM4 plasma, CrossR1 plasma and Mab 4E10

VIRUS	COT6.15	MAB 4E10	ITM_01	ITM4_07	CROSSR1
AA	MUTATION	IC50 ^a	IC50 ^b	IC50 ^c	IC50 ^d
	WT	1,11	603	3544	249
K	667A	0,43	556	>4860	367
N	668A	4,63	117	472	50
L	669A	0,15	929	>4860	528
W	670A	0,93	445	>4860	163
S	671A	0,23	644	>4860	211
W	672A	>25	241	4189	115
F	673A	>25	70	1177	39
D	674A	4,43	63	516	29
I	675A	0,15	333	>4860	193
T	676A	>25	188	2069	61
K	677A	0,38	640	4285	180
W	678A	0,22	801	>4860	391
L	679A	0,49	317	>4860	398
W	680A	4,00	479	>4860	360

AA: amino acids in the 4E10 region of the COT6.15 virus

Alanine-replacements inducing a 3-fold or higher decrease in sensitivity are indicated in grey.

^aAntibody concentration ($\mu\text{g/ml}$) causing 50% reduction of relative light units compared to the virus control.

^bPlasma dilution causing 50% reduction of relative light units compared to the virus control.

ies against the C1 region in a subtype CRF01_AE infected HIV-1 individual, however, immunization studies performed with C1 epitopes did not result in neutralizing antibodies [44,45]. The role of the C1 antibodies in the neutralization capacity of ITM4 should be further analyzed. Moreover, the effect of the duplication event in the C1 region should be examined to reveal its role in the occurrence of 4E10 resistance.

To show the contribution of the 4E10-like antibodies to the neutralizing capacity of the ITM4 plasma, we used a 4E10 sensitive subtype C virus (COT6.15) with alanine-replacements at several positions in the 4E10 epitope. The results confirmed that the neutralization capacity of the ITM4 plasma is partially due to the presence of 4E10-like antibodies. This is consistent with the findings of Gray *et al.*, showing that anti-MPER antibodies are responsible for BCN activity found in some plasma [46]. Furthermore, a major overlap was seen between the residues affecting 4E10 neutralization and ITM4 neutralization, indicating the similar specificities of both antibodies.

Conclusions

In summary, the conserved 4E10 epitope is highly targeted by vaccine developers, but none has succeeded to generate an antigen capable of eliciting 4E10-like antibodies. Here we provide data that the 4E10 region is not only accessible in patient ITM4, but also immunogenic. ITM4 Env sequence analysis indicates unique gp120 C1 insertions that may have an impact on gp41 conformation and 4E10 epitope presentation. Furthermore, this case confirms that 4E10-like antibodies with neutralizing characteristics can be elicited during HIV infection, and thus the inclusion of ITM4 envelope properties in a prophylactic vaccine might be very promising. However, researchers should take into account that once infection has occurred, neutralizing antibodies can easily be evaded by escape mutants, resulting in "normal" disease progression, as shown in this patient.

Methods

Human plasma, Antibodies and Peptides

Plasma samples were obtained from HIV-1 seropositive individuals attending the clinic at the Institute of Tropical Medicine, Antwerp (ITM). All samples were heated at 56°C for 30 minutes to inactivate complement. The studies have been approved by the ITM Institutional Review Board. HIV-1 Mabs 2F5, 4E10, 2G12 and b12 were purchased from Polymun Scientific (Vienna, Austria). Peptides were obtained through the AIDS Research and Reference Reagent Program, Division of AIDS, NIAID, NIH.

Peptide Phage Display

A New England Biolabs Ph.D.-12 Phage Display Peptide Library Kit (Westburg BV, Leusden, Belgium) was panned

for selection of peptide phage binding IgG from a pool of nine ITM4 plasma samples collected between 2001 and 2007, as described previously [16]. Briefly, plasma IgG were linked to magnetic microbeads (Dynabeads M-450 Tosylactivated; Invitrogen, Merelbeke, Belgium) coated with an anti-human IgG (Fc-specific; Lucron bioproducts, De Pinte, Belgium). Peptide phage were selected from the library of $>2 \times 10^9$ random peptides by performing alternately positive (\sim pool of ITM4 IgG) and negative (\sim pool of HIV negative IgG) selection rounds. Panning was repeated 3 times on amplified phage eluate to enrich for peptide phage binding specifically to the target antibodies. Phage collected after the third positive selection round were titrated and single clones were randomly picked and subjected to analysis by capture ELISA and DNA sequencing.

Antibody binding assay (ELISA)

A capture ELISA was used to identify peptide phage binding to the target antibodies. Microtiter plates were coated overnight at 4°C with a 1/10⁴ plasma-dilution in phosphate buffered saline (PBS). Plates were blocked for 2 hours with 5% skimmed milk powder in PBS (5%MPBS) at 37°C and washed 3 times with 0.01%Tween-20/PBS. An amount of 10¹¹ phage in 1%MPBS were added and left overnight at 4°C. The plates were washed 4 times before adding HRP-conjugated anti-M13 monoclonal antibody (GE Healthcare, Diegem, Belgium) 1/2000 diluted in 0.01%Tween-20/PBS. After 1 h, color development was performed with ortho-phenylenediamine dissolved in citrate buffer (pH 5) with 0.001% H₂O₂. Plates were incubated in the dark at room temperature and results were expressed as difference between OD405nm and OD620nm, read with an automated ELISA reader.

Competitive ELISA

Competitive ELISA assays were performed as described above, 10 µg/ml peptide was added to the antibody-coated plates 1 h before the phage were applied.

Sequencing of DNA inserts

Reactive peptide phage were amplified in *E. coli* and single-stranded DNA was isolated using a QIAprep Spin M13 Kit (Qiagen Benelux BV, Venlo, The Netherlands). Sequences encoding the phage peptides were generated, edited, translated and analyzed using Lasergene Software (DNASTAR, Wisconsin, USA).

Autoreactive antibody assay

The anticardiolipin antibodies were measured in an ELISA assay as previously described [47]. Briefly, wells of polystyrene microtiter plates were coated with 30 µl of CL (from bovine heart, Sigma, St Louis, MO) dissolved in ethanol (50 µg/ml) and evaporated overnight at 4°C. Then, the wells were blocked with 150 µl of a mixture of 1% (w/v) bovine serum albumin (Invitrogen, Merelbeke,

Belgium) in PBS for 1.5 hour at room temperature. Next, the wells were washed two times with PBS. Plasma specimens, diluted 1:50 in 1%BSA/PBS, were added (100 µl/well) to the CL-coated wells and incubated for 2.5 h at room temperature. After washing three times with PBS, horseradish peroxidase conjugated goat anti-human IgG (Fc specific) (Biosource, Nivelles, Belgium) was diluted 1:5000 in 1%BSA/PBS, added to the wells (100 µl/well) and incubated for 1.5 hour at room temperature. After washing, ortho-phenylenediamine dissolved in citrate phosphate buffer (pH 5) and urea hydrogen peroxide, were added to the wells (100 µl) to initiate color reaction. The color reaction was stopped by addition of 50 µl/well of 2 M H₂SO₄. Optical densities (ODs) were measured at 492 nm using an ELISA reader. Results were expressed in GPL/ml units according to Harris *et al.* [48].

Anti-dsDNA antibodies were detected by the indirect immunofluorescence on *Crithidia lucilliae*. In brief, *Crithidia lucilliae*, fixed on wells of a glass slide, was used as a substrate. A series of dilutions (starting at 1:10) of patient plasma was added to the wells. After 30 minutes of incubation the wells were washed three times with phosphate-buffered saline (PBS) and FITC-labelled anti-human IgG (The Binding Site, BMD, Antwerp, Belgium) was added to the wells to induce an antigen-antibody reaction. After washing the wells, the fluorescence of the kinetoplast was evaluated under a fluorescence microscope. A positive test was considered at a titer of 1:10 or above [49].

The anti Ro/SSa and anti Jo1 antibodies were measured in an immunodot (ENA-DOT 7, BMD, Antwerp, Belgium) as written in the manufacturer's instructions.

HIV-1 viral isolates and pseudoviruses

The origins and sources of the virus isolates have been described previously (Davis *et al.*, 2003) [20]. The following reagents were obtained through the NIH AIDS Research and Reference Reagent Program, Division of AIDS, NIAID, NIH: 89.6 (R. Collman; cat# 1966); 92US076 (J. Sullivan; cat# 2453), 92US077 (J. Sullivan; cat# 2454), 93US143 (M. Robb; cat# 2755); 92TH022 and 92UG037 (The UNAIDS Network for HIV isolation and characterization, and DAIDS, NIAID; cat# 1743 and cat# 1690). The virus Env plasmids 92RW009, SF162, AC10, CAAN, 92BR025, Du174, UG024 and CM244 were obtained from L. Heyndrickx through the NeutNet program [50]. JRFL was kindly provided by D. Burton (San Diego, USA). The virus plasmids for wild type and mutant COT6.15 Envs were kindly provided by E. Gray (Johannesburg, South Africa).

HIV-1 Env expression plasmid clones

The virus plasmids PIC32281, VI829, VI882, VI1358, VI1090, CA18, ITM4_01, ITM4_04, ITM4_07.1 and

ITM4_07.2 were generated from extracted plasma RNA (QiaAmp® Viral RNA Minikit, Qiagen Benelux BV, Venlo, The Netherlands). The complete env sequence was obtained by RT-PCR, followed by nested PCR, and was cloned in an expression vector (pcDNA4/TO; Invitrogen, Merelbeke, Belgium) [51].

Production of Env-pseudotyped viruses

Cotransfection of 293T cells with an HIV-1 Env expression vector and pNL4-3.Luc. R-E- (obtained from NIH AIDS Research and Reference Reagent Program and contributed by Nathaniel Landau) was evaluated for the generation of luciferase-encoding HIV-1 virions pseudotyped with the desired HIV-1 Env proteins [51].

Sequence analysis

Env clones of infectious ITM4 pseudoviruses were sequenced. The sequences were assembled and edited using DNASTAR software (Lasergene, Wisconsin, USA). The HIV-1 env nucleotide sequence data were deposited in the EMBL Genbank and DDBJ nucleotide sequence databases under following accession numbers: FN432725-FN432728.

Pseudovirus neutralization assay

Pseudovirus neutralization assays were conducted using Mabs and autologous patient plasma as previously described [52], http://www.europrise.org/neutnet_sops.html; SOP10. Infection levels were determined after 48 h, by measuring luciferase activity. ID50/IC50 was calculated as the reciprocal plasma dilution antibody concentration (µg/ml) respectively causing 50% reduction of relative light units compared to the virus control.

Primary virus neutralization assay

The primary virus neutralization assay used, is in detail described on the Europrise website: http://www.europrise.org/neutnet_sops.html; SOP6B. Neutralization ≥80% was considered potent.

Competing interests

The authors declare that they have no competing interests.

Authors' contributions

TD performed the majority of the experimental work and the data analysis and drafted the manuscript. LH, BW, LVN and KG contributed to the experimental work. EG contributed to the study design and provided HIV Env plasmids. GV and WJ contributed to the study design and were involved in critically revising the manuscript.

Acknowledgements

This project was supported by the Research Foundation, Flanders (FWO project G 0302.01). We thank the ITM AIDS Reference Centre (ARC) and Laboratory (ARL) for patient follow up and clinical data. The env plasmids 92RW009, SF162, AC10, CAAN, 92BR025, Du174, UG024 and CM244

from Leo Heyndrickx were provided by the EU Programme EVA Centre for AIDS Reagents, NIBSC, UK (AVIP Contract Number LSHP-CT-2004-503487). We thank Dr. Khadija Guerti and the team from the Department of Laboratory Medicine, Division of Hematology and Hemostasis, University Hospital of Antwerp, Belgium for performing the autoreactive antibody assay. Tessa Dieltjens is supported by a PhD scholarship of the Institute for the Promotion of Innovation by Science and Technology in Flanders (IWT).

References

- Moog C, Fleury HJ, Pellegrin I, Kirn A, Aubertin AM: **Autologous and heterologous neutralizing antibody responses following initial seroconversion in human immunodeficiency virus type I-infected individuals.** *J Virol* 1997, **71**:3734-3741.
- Nyambi PN, Lewi P, Peeters M, Janssens W, Heyndrickx L, Franssen K, Andries K, Haesevelde M, Vanden Heene J, Piot P, Groen G van der: **Study of the dynamics of neutralization escape mutants in a chimpanzee naturally infected with the simian immunodeficiency virus SIVcpz-ant.** *J Virol* 1997, **71**:2320-2330.
- Binley JM, Wrin T, Korber B, Zwick MB, Wang M, Chappay C, Stiegler G, Kunert R, Zolla-Pazner S, Katinger H, Petropoulos CJ, Burton DR: **Comprehensive cross-clade neutralization analysis of a panel of anti-human immunodeficiency virus type I monoclonal antibodies.** *J Virol* 2004, **78**:13232-13252.
- Ferrantelli F, Rasmussen RA, Buckley KA, Li PL, Wang T, Montefiori DC, Katinger H, Stiegler G, Anderson DC, McClure HM, Ruprecht RM: **Complete protection of neonatal rhesus macaques against oral exposure to pathogenic simian-human immunodeficiency virus by human anti-HIV monoclonal antibodies.** *J Infect Dis* 2004, **189**:2167-2173.
- Ruprecht RM, Ferrantelli F, Kitabwalla M, Xu W, McClure HM: **Antibody protection: passive immunization of neonates against oral AIDS virus challenge.** *Vaccine* 2003, **21**:3370-3373.
- Hessell AJ, Poignard P, Hunter M, Hangartner L, Tehrani DM, Bleeker WK, Parren PW, Marx PA, Burton DR: **Effective, low-titer antibody protection against low-dose repeated mucosal SHIV challenge in macaques.** *Nat Med* 2009, **15**:951-954.
- Hessell AJ, Rakasz EG, Poignard P, Hangartner L, Landucci G, Forthal DN, Koff WC, Watkins DI, Burton DR: **Broadly neutralizing human anti-HIV antibody 2G12 is effective in protection against mucosal SHIV challenge even at low serum neutralizing titers.** *PLoS Pathog* 2009, **5**:e1000433.
- Trkola A, Kuster H, Rusert P, Joos B, Fischer M, Leemann C, Manrique A, Huber M, Rehr M, Oxenius A, Weber R, Stiegler G, Vcelar B, Katinger H, Aceto L, Günthard HF: **Delay of HIV-1 rebound after cessation of antiretroviral therapy through passive transfer of human neutralizing antibodies.** *Nat Med* 2005, **11**:615-622.
- Bower JF, Li Y, Wyatt R, Ross TM: **HIV-1 Envgp140 trimers elicit neutralizing antibodies without efficient induction of conformational antibodies.** *Vaccine* 2006, **24**:5442-5451.
- Mascola JR, Snyder SW, Weislow OS, Belay SM, Belshe RB, Schwartz DH, Clements ML, Dolin R, Graham BS, Gorse GJ, Keefer MC, McElrath MJ, Walker MC, Wagner KF, McNeil JG, McCutchan FE, Burke DS: **Immunization with envelope subunit vaccine products elicits neutralizing antibodies against laboratory-adapted but not primary isolates of human immunodeficiency virus type 1. The National Institute of Allergy and Infectious Diseases AIDS Vaccine Evaluation Group.** *J Infect Dis* 1996, **173**:340-348.
- Dong M, Zhang PF, Grieder F, Lee J, Krishnamurthy G, VanCott T, Broder C, Polonis VR, Yu XF, Shao Y, Faix D, Valente P, Quinnan GV Jr: **Induction of primary virus-cross-reactive human immunodeficiency virus type I-neutralizing antibodies in small animals by using an alphavirus-derived in vivo expression system.** *J Virol* 2003, **77**:3119-3130.
- Quinnan GV Jr, Zhang PF, Fu DW, Dong M, Alter HJ: **Expression and characterization of HIV type I envelope protein associated with a broadly reactive neutralizing antibody response.** *AIDS Res Hum Retroviruses* 1999, **15**:561-570.
- Zhang PF, Cham F, Dong M, Choudhary A, Bouma P, Zhang Z, Shao Y, Feng YR, Wang L, Mathy N, Voss G, Broder CC, Quinnan GV Jr: **Extensively cross-reactive anti-HIV-1 neutralizing antibodies induced by gp140 immunization.** *Proc Natl Acad Sci USA* 2007, **104**:10193-10198.
- Frey G, Peng H, Rits-Volloch S, Morelli M, Cheng Y, Chen B: **A fusion-intermediate state of HIV-1 gp41 targeted by broadly neutralizing antibodies.** *Proc Natl Acad Sci USA* 2008, **105**:3739-3744.
- Humbert M, Rasmussen RA, Ong H, Kaiser FM, Hu SL, Ruprecht RM: **Inducing cross-clade neutralizing antibodies against HIV-1 by immunofocusing.** *PLoS One* 2008, **3**:e3937.
- Humbert M, Antoni S, Brill B, Landersz M, Rodes B, Soriano V, Wintergerst U, Knechten H, Staszewski S, von Laer D, Dittmar MT, Dietrich U: **Mimotopes selected with antibodies from HIV-1-neutralizing long-term non-progressor plasma.** *Eur J Immunol* 2007, **37**:501-515.
- Scala G, Chen X, Liu W, Telles JN, Cohen OJ, Vaccarezza M, Igarashi T, Fauci AS: **Selection of HIV-specific immunogenic epitopes by screening random peptide libraries with HIV-1-positive sera.** *J Immunol* 1999, **162**:6155-6161.
- Yuste E, Sanford HB, Carmody J, Bixby J, Little S, Zwick MB, Greenough T, Burton DR, Richman DD, Desrosiers RC, Johnson WE: **Simian immunodeficiency virus engrafted with human immunodeficiency virus type I (HIV-1)-specific epitopes: replication, neutralization, and survey of HIV-1-positive plasma.** *J Virol* 2006, **80**:3030-3041.
- Shen X, Parks RJ, Montefiori DC, Kirchherr JL, Keele BF, Decker JM, Blattner WA, Gao F, Weinhold KJ, Hicks CB, Greenberg ML, Hahn BH, Shaw GM, Haynes BF, Tomaras GD: **In vivo gp41 antibodies targeting the 2F5 monoclonal antibody epitope mediate human immunodeficiency virus type I neutralization breadth.** *J Virol* 2009, **83**:3617-3625.
- Davis D, Donners H, Willems B, Vermoesen T, Heyndrickx L, Colebunders R, Groen G van der: **Epitopes corresponding to the envelope genetic subtype are present on the surface of free virions of HIV-1 group M primary isolates and can be detected in neutralization assays with extended incubation phases.** *J Med Virol* 2003, **71**:332-342.
- Cardoso RM, Brunel FM, Ferguson S, Zwick M, Burton DR, Dawson PE, Wilson IA: **Structural basis of enhanced binding of extended and helically constrained peptide epitopes of the broadly neutralizing HIV-1 antibody 4E10.** *J Mol Biol* 2007, **365**:1533-1544.
- Cardoso RM, Zwick MB, Stanfield RL, Kunert R, Binley JM, Katinger H, Burton DR, Wilson IA: **Broadly neutralizing anti-HIV antibody 4E10 recognizes a helical conformation of a highly conserved fusion-associated motif in gp41.** *Immunity* 2005, **22**:163-173.
- Binley JM, Lybarger EA, Crooks ET, Seaman MS, Gray E, Davis KL, Decker JM, Wycuff D, Harris L, Hawkins N, Wood B, Nathe C, Richman D, Tomaras GD, Bibollet-Ruche F, Robinson JE, Morris L, Shaw GM, Montefiori DC, Mascola JR: **Profiling the specificity of neutralizing antibodies in a large panel of plasmas from patients chronically infected with human immunodeficiency virus type I subtypes B and C.** *J Virol* 2008, **82**:11651-11668.
- Li Y, Svehla K, Louder MK, Wycuff D, Phogat S, Tang M, Migueles SA, Wu X, Phogat A, Shaw GM, Connors M, Hoxie J, Mascola JR, Wyatt R: **Analysis of neutralization specificities in polyclonal sera derived from human immunodeficiency virus type I-infected individuals.** *J Virol* 2009, **83**:1045-1059.
- Sather DN, Armann J, Ching LK, Mavrantoni A, Sellhorn G, Caldwell Z, Yu X, Wood B, Self S, Kalams S, Stamatos L: **Factors associated with the development of cross-reactive neutralizing antibodies during human immunodeficiency virus type I infection.** *J Virol* 2009, **83**:757-769.
- Haynes BF, Fleming J, St Clair EVV, Katinger H, Stiegler G, Kunert R, Robinson J, Scarce RM, Plonk K, Staats HF, Ortel TL, Liao HX, Alam SM: **Cardiolipin polyspecific autoreactivity in two broadly neutralizing HIV-1 antibodies.** *Science* 2005, **308**:1906-1908.
- Scherer EM, Zwick MB, Teyton L, Burton DR: **Difficulties in eliciting broadly neutralizing anti-HIV antibodies are not explained by cardiolipin autoreactivity.** *Aids* 2007, **21**:2131-2139.
- Asherson RA, Cervera R: **Antiphospholipid antibodies and infections.** *Ann Rheum Dis* 2003, **62**:388-393.
- Muster T, Steindl F, Purtscher M, Trkola A, Klima A, Himmler G, Rucker F, Katinger H: **A conserved neutralizing epitope on gp41 of human immunodeficiency virus type I.** *J Virol* 1993, **67**:6642-6647.

30. Zwick MB, Jensen R, Church S, Wang M, Stiegler G, Kunert R, Kattinger H, Burton DR: **Anti-human immunodeficiency virus type I (HIV-1) antibodies 2F5 and 4E10 require surprisingly few crucial residues in the membrane-proximal external region of glycoprotein gp41 to neutralize HIV-1.** *J Virol* 2005, **79**:1252-1261.
31. Manrique A, Rusert P, Joos B, Fischer M, Kuster H, Leemann C, Niederost B, Weber R, Stiegler G, Kattinger H, Günthard HF, Trkola A: **In vivo and in vitro escape from neutralizing antibodies 2G12, 2F5, and 4E10.** *J Virol* 2007, **81**:8793-8808.
32. Gray ES, Moore PL, Bibollet-Ruche F, Li H, Decker JM, Meyers T, Shaw GM, Morris L: **4E10-resistant variants in a human immunodeficiency virus type I subtype C-infected individual with an anti-membrane-proximal external region-neutralizing antibody response.** *J Virol* 2008, **82**:2367-2375.
33. Pinter A, Honnen WJ, He Y, Gorny MK, Zolla-Pazner S, Kayman SC: **The VI/V2 domain of gp120 is a global regulator of the sensitivity of primary human immunodeficiency virus type I isolates to neutralization by antibodies commonly induced upon infection.** *J Virol* 2004, **78**:5205-5215.
34. Gray ES, Taylor N, Wycuff D, Moore PL, Tomaras GD, Wibmer CK, Puren A, DeCamp A, Gilbert PB, Wood B, Montefiori DC, Binley JM, Shaw GM, Haynes BF, Mascola JR, Morris L: **Antibody specificities associated with neutralization breadth in plasma from human immunodeficiency virus type I subtype C-infected blood donors.** *J Virol* 2009, **83**:8925-8937.
35. Enshell-Seiffers D, Smelyanski L, Vardinon N, Yust I, Gershoni JM: **Dissection of the humoral immune response toward an immunodominant epitope of HIV: a model for the analysis of antibody diversity in HIV+ individuals.** *Faseb J* 2001, **15**:2112-2120.
36. Lu L, Zhu Y, Huang J, Chen X, Yang H, Jiang S, Chen YH: **Surface exposure of the HIV-1 env cytoplasmic tail LLP2 domain during the membrane fusion process: interaction with gp41 fusion core.** *J Biol Chem* 2008, **283**:16723-16731.
37. Richman DD, Wrin T, Little SJ, Petropoulos CJ: **Rapid evolution of the neutralizing antibody response to HIV type I infection.** *Proc Natl Acad Sci USA* 2003, **100**:4144-4149.
38. Wei X, Decker JM, Wang S, Hui H, Kappes JC, Wu X, Salazar-Gonzalez JF, Salazar MG, Kilby JM, Saag MS, Komarova NL, Nowak MA, Hahn BH, Kwong PD, Shaw GM: **Antibody neutralization and escape by HIV-1.** *Nature* 2003, **422**:307-312.
39. Bunnik EM, Pisas L, van Nuenen AC, Schuitemaker H: **Autologous neutralizing humoral immunity and evolution of the viral envelope in the course of subtype B human immunodeficiency virus type I infection.** *J Virol* 2008, **82**:7932-7941.
40. Veiga AS, Pattenden LK, Fletcher JM, Castanho MA, Aguilar MI: **Interactions of HIV-1 antibodies 2F5 and 4E10 with a gp41 epitope prebound to host and viral membrane model systems.** *Chembiochem* 2009, **10**:1032-1044.
41. McCaffrey RA, Saunders C, Hensel M, Stamatatos L: **N-linked glycosylation of the V3 loop and the immunologically silent face of gp120 protects human immunodeficiency virus type I SF162 from neutralization by anti-gp120 and anti-gp41 antibodies.** *J Virol* 2004, **78**:3279-3295.
42. Wang J, Sen J, Rong L, Caffrey M: **Role of the HIV gp120 conserved domain I in processing and viral entry.** *J Biol Chem* 2008, **283**:32644-32649.
43. Peleg O, Brunak S, Trifonov EN, Nevo E, Bolshoy A: **RNA secondary structure and sequence conservation in CI region of human immunodeficiency virus type I env gene.** *AIDS Res Hum Retroviruses* 2002, **18**:867-878.
44. Sreepian A, Permmongkol J, Kantakamalakul W, Siritantikorn S, Tantieng N, Sutthent R: **HIV-1 neutralization by monoclonal antibody against conserved region 2 and patterns of epitope exposure on the surface of native viruses.** *J Immune Based Ther Vaccines* 2009, **7**:5.
45. Sreepian A, Srisurapanon S, Horthongkham N, Tunsupasawadikul S, Kaoriangudom S, Khumsmith S, Sutthent R: **Conserved neutralizing epitopes of HIV type I CRF01_AE against primary isolates in long-term nonprogressors.** *AIDS Res Hum Retroviruses* 2004, **20**:531-542.
46. Gray ES, Madiga MC, Moore PL, Mlisana K, Abdool Karim SS, Binley JM, Shaw GM, Mascola JR, Morris L: **Broad neutralization of human immunodeficiency virus type I mediated by plasma antibodies against the gp41 membrane proximal external region.** *J Virol* 2009, **83**:11265-11274.
47. Swadzba J, De Clerck LS, Stevens WJ, Bridts CH, van Cotthem KA, Musial J, Jankowski M, Szczeklik A: **Anticardiolipin, anti-beta(2)-glycoprotein I, antiprothrombin antibodies, and lupus anticoagulant in patients with systemic lupus erythematosus with a history of thrombosis.** *J Rheumatol* 1997, **24**:1710-1715.
48. Harris EN, Gharavi AE, Patel SP, Hughes GR: **Evaluation of the anti-cardiolipin antibody test: report of an international workshop held 4 April 1986.** *Clin Exp Immunol* 1987, **68**:215-222.
49. Aarden LA, de Groot ER, Feltkamp TE: **Immunology of DNA. III. Crithidia luciliae, a simple substrate for the determination of anti-dsDNA with the immunofluorescence technique.** *Ann N Y Acad Sci* 1975, **254**:505-515.
50. Fenyo EM, Heath A, Dispinseri S, Holmes H, Lusso P, Zolla-Pazner S, Donners H, Heyndrickx L, Alcamí J, Bongertz V, Jassoy C, Malnati M, Montefiori D, Moog C, Morris L, Osmanov S, Polonis V, Sattentau Q, Schuitemaker H, Sutthent R, Wrin T, Scarlatti G: **International network for comparison of HIV neutralization assays: the NeutNet report.** *PLoS One* 2009, **4**:e4505.
51. Beels D, Heyndrickx L, Vereecken K, Vermoesen T, Michiels L, Vanham G, Kestens L: **Production of human immunodeficiency virus type I (HIV-1) pseudoviruses using linear HIV-1 envelope expression cassettes.** *J Virol Methods* 2008, **147**:99-107.
52. Montefiori DC: **Measuring HIV neutralization in a luciferase reporter gene assay.** *Methods Mol Biol* 2009, **485**:395-405.

Publish with **BioMed Central** and every scientist can read your work free of charge

"BioMed Central will be the most significant development for disseminating the results of biomedical research in our lifetime."

Sir Paul Nurse, Cancer Research UK

Your research papers will be:

- available free of charge to the entire biomedical community
- peer reviewed and published immediately upon acceptance
- cited in PubMed and archived on PubMed Central
- yours — you keep the copyright

Submit your manuscript here:
http://www.biomedcentral.com/info/publishing_adv.asp

